

CURVE DATA TABLE

NO.	DELTA	RADIUS	LENGTH
C1	27°42'07"	37.38'	18.07'
C2	31°26'58"	50.92'	27.95'
C3	33°01'33"	500.00'	288.20'

LINE DATA TABLE

NO.	BEARING	DISTANCE
L1	N75°32'26"E	21.82'
L2	N76°45'27"W	23.87'
L4	N22°15'52"W(R)	---
L7	N16°21'04"W	8.72'
L8	N46°51'35"W	17.68'
L9	N78°01'38"E	26.20'

LEGEND

- NEW 24"x36" CONCRETE DRAIN BOX INLET WITH A FLOOR PLUS FOSSIL FILTER INSERT FOR THE PRE-TREATMENT OF STORMWATER RUNOFF.
- PROPOSED INOB INSTALLED AND MAINTAINED 22'-6" TALL FIXTURE HEIGHT LIGHT POLE ON TOP OF A 30" TALL 24" DIAMETER CONCRETE BASE FOR A TOTAL HEIGHT OF 25' TALL.
- PROPOSED INOB INSTALLED AND MAINTAINED DROUGHT TOLERANT LANDSCAPED PLANTER AND IRRIGATION SYSTEM ON SITE, INCLUDING AREA UNDER BUILDING ROOF OVERHANGS (ROH) AND VEHICLE OVERHANG (VOH) CONSISTING OF APPROXIMATELY 14,128 SQUARE FEET (25.5%).
- BLACK TRUNCATED DOMES DETECTABLE WARNING STRIP.
- VEHICLE DETECTOR LOOP.
- PROPERTY LINE.
- OUTDOOR SEATING PATIO TABLE WITH UMBRELLA (4 SEATS).
- OUTDOOR SEATING PATIO TABLE WITH NO UMBRELLA (4 SEATS).
- OUTDOOR SEATING PATIO TABLE WITH NO UMBRELLA (2 SEATS).
- NEW 3' TALL 18"x24" LIT "DRIVE THRU" DIRECTIONAL SIGN.
- NEW 3' TALL 18"x24" LIT "THANK YOU, DO NOT ENTER" DIRECTIONAL SIGN.
- NEW PEDESTRIAN CROSSWALK SIGN.
- NEW ACCESSIBILITY ENTRY SIGN.
- DO NOT ENTER SIGN.
- IN-N-OUT BURGER.
- FUTURE EV (ELECTRIC VEHICLE) CHARGING STATION, PROPOSED 4" DIAMETER ELECTRIC PULL BOX, AND A CLEAR FLOOR SPACE.
- 24" WIDE MATTED INOB ASSOCIATE WALKWAY CONSISTING OF APPROXIMATELY 370 SQUARE FEET.
- PROPOSED PRECAST CONCRETE MODULAR WETLANDS UNIT W/ETLANDMOB-6-8-5-0"V STORMWATER BIOFILTRATION SYSTEM.
- CF CURB FACE.
- LOC INOB LIMITS OF PROPOSED CONSTRUCTION.
- LL PROPOSED INOB LEASE PREMISES LINE.
- VOH VEHICLE OVERHANG WITH NO OBSTRUCTIONS INCLUDING LIGHT POLES, TREES AND SIGNAGE.
- ADA ACCESSIBLE PATH OF TRAVEL. ACCESSIBLE PATH OF TRAVEL IS NOT LESS THAN 4 FEET WIDE, AND DOES NOT EXCEED A RUNNING SLOPE OF 1:20 (5%) OR A CROSS SLOPE IN EXCESS OF 1:50 (2%). REFER TO SHEET C33 FOR SPECIFIC SLOPES AND GRADES.
- PROPOSED SD&E PAD MOUNT TRANSFORMER WITH BOLLARDS.
- PORTABLE TRASH RECEPTACLE ON A MINIMUM 24"x24"x4" CONCRETE PAD.
- NEW CONCRETE SIDEWALK.
- REFER TO THE BOUNDARY MONUMENT AND SURVEY CONTROL POINT DESCRIPTIONS SHOWN ON SHEET C37.
- SIMPLIFIED PLOTTABLE EASEMENT DESCRIPTION SHOWN ON SHEET C36.
- DRIVE-THRU CATWALK CONCRETE PAD WITH UMBRELLA STAND.
- PROPOSED 18" TO 27" TALL 22" WIDE STUCCO COVERED SEAT/SCREEN WALL WITH A PRECAST CONCRETE CAP.
- PROPOSED INOB INSTALLED AND MAINTAINED OFFSITE STREET DROUGHT TOLERANT LANDSCAPE PLANTER AND IRRIGATION SYSTEM CONSISTING OF APPROXIMATELY 676 SQUARE FEET.
- 8' TALL STUCCO COVERED CMU ENCLOSURE TO MATCH THE INOB BUILDING FOR THE SD&E, ELECTRIC MAIN SERVICE DISCONNECT SWITCH.
- EXPOSED HEIGHT OF PROPOSED CMU RETAINING WALL IN FEET WITH A 6' TALL TSF ON TOP.
- PROPOSED TAN COLORED SPLIT-FACE CMU WALL WITH A 2" CAP.
- REFER TO SHEET C36 FOR ENCROACHMENT NOTES.

GENERAL NOTES

- GROSS SITE AREA: 57,129 SQ. FT. OR 1.311 ACRES.
STREET EASEMENT: 1,712 SQ. FT. OR 0.039 ACRES.
NET SITE AREA: 55,417 SQ. FT. OR 1.272 ACRES.
- EXISTING CITY ZONE: MXD-2 (MAJOR MIXED-USE DISTRICT).
- GENERAL PLAN LAND USE DESIGNATION: MAJOR MIXED-USE (75 DU/AC MAX; FAR 3.5).
- EXISTING LAND USE: ONE STORY 6,178 SQUARE FOOT "FAMILY HOUSE OF PANCAKES" RESTAURANT CURRENTLY IN OPERATION WITH A 77 SPACE SURFACE PARKING LOT AND 2 CELL TOWERS.
- 10 SPACES PER 1,000 SQUARE FEET OF FLOOR AREA (PLUS OUTDOOR SEATING AREA PER SIR).
- IN-N-OUT BURGER URBAN BUILDING AREA = 3,879 S.F.
INDOOR SEATING = 84 SEATS.
OUTDOOR SEATING = 52 SEATS (16 TABLES).
OUTDOOR SEATING AREA = 64 S.F. EACH FOR 9-4 SEAT TABLES (596 S.F.) PLUS 20 S.F. FOR 6-2 SEAT TABLES (120 S.F.) = 696 S.F.
- REQUIRED LANDSCAPE AREA WITHIN PROPERTY (20%) = 11,083 S.F.
- LANDSCAPE AREA PROVIDED WITHIN PROPERTY = 14,111 S.F. (25.5%).

IN-N-OUT BURGER PARKING SPACE DETAILED SUMMARY TABLE

DESCRIPTION	EXISTING	REQUIRED	PROPOSED
1. STANDARD SPACE (9'x18')	73	41	40
2. ACCESSIBLE VAN (17'x18' PLUS A 2' VOH)	1	1	1
3. ACCESSIBLE SPACE (14'x18' PLUS A 2' VOH)	3	1	2
4. FUTURE ACCESSIBLE VAN EV PARKING (17'x18' PLUS A 2' VOH)	0	1	1
5. FUTURE EV PARKING (9'x18' PLUS A 2' VOH)	0	1	3
6. CLEAN AIR/VAN POOL/EV (9'x18')	0	1	2
7. COMPACT SPACES (8'x16' WITH NOT MORE THAN 11 SPACES)	0	0	6
8. TOTAL	77	46	55
9. IN-N-OUT BURGER DRIVE THRU VEHICLE QUEUE (20' LONG INOB VEHICLE WITH NO CITY REQUIRED LENGTH PRIOR TO THE MENU BOARD)	0	0	29
10. SHORT-TERM BICYCLE PARKING WITHIN DESIGNATED BIKE RACK (1 BIKE SPACE PER 20 VEHICLE SPACES)	0	3	4
11. LONG-TERM BICYCLE PARKING WITHIN A LOCKABLE PERMANENTLY ANCHORED LOCKER ON A CONCRETE SLAB	0	0	0

10. ALL NEW SIGNS SHALL BE APPROVED BY A SEPARATE CITY PERMIT.
11. ASSESSOR PARCEL NUMBER: 557-420-31.
12. MAXIMUM ALLOWED FAR = 2.5.
FAR PROVIDED = 0.07.

SHEET INDEX OF CITY ENTITLEMENT DRAWINGS

NO.	SHEET TITLE
C30	CITY ENTITLEMENT NEW SITE PLAN
C31	CITY ENTITLEMENT EXISTING SITE PLAN
C32	CITY ENTITLEMENT DEMOLITION PLAN
C33	CITY ENTITLEMENT GRADING AND DRAINAGE PLAN
C34	CITY ENTITLEMENT STORM DRAIN AND UTILITY PLAN
C35	CITY ENTITLEMENT SWQMP SITE PLAN
C35.1	CITY ENTITLEMENT EXISTING CONDITION HYDROLOGY STUDY MAP
C35.2	CITY ENTITLEMENT PROPOSED CONDITION HYDROLOGY STUDY MAP
C36	CITY ENTITLEMENT TOPOGRAPHY SURVEY MAP
C37	CITY ENTITLEMENT BOUNDARY AND EASEMENT MAP
LPP.1	CITY ENTITLEMENT LANDSCAPE PLANTING PLAN

ATTACHMENT 3

IN-N-OUT BURGER

DEVELOPER:
IN-N-OUT BURGER
13502 HAMBURGER LANE
BALDWIN PARK, CA 91706
CONTACT: CASSIE YEE
PHONE: 626 813-8226

Underground Service Alert

Call: Toll Free
811
TWO WORKING DAYS BEFORE YOU DIG

REVISIONS

△

△

△

△

△

GHA PROJECT NO. -----

GHA
Architecture/Development
14901 Quorum Drive
Suite 300
Dallas Texas 75254
Ph: (972) 239-8884
Fax: (972) 239-5054

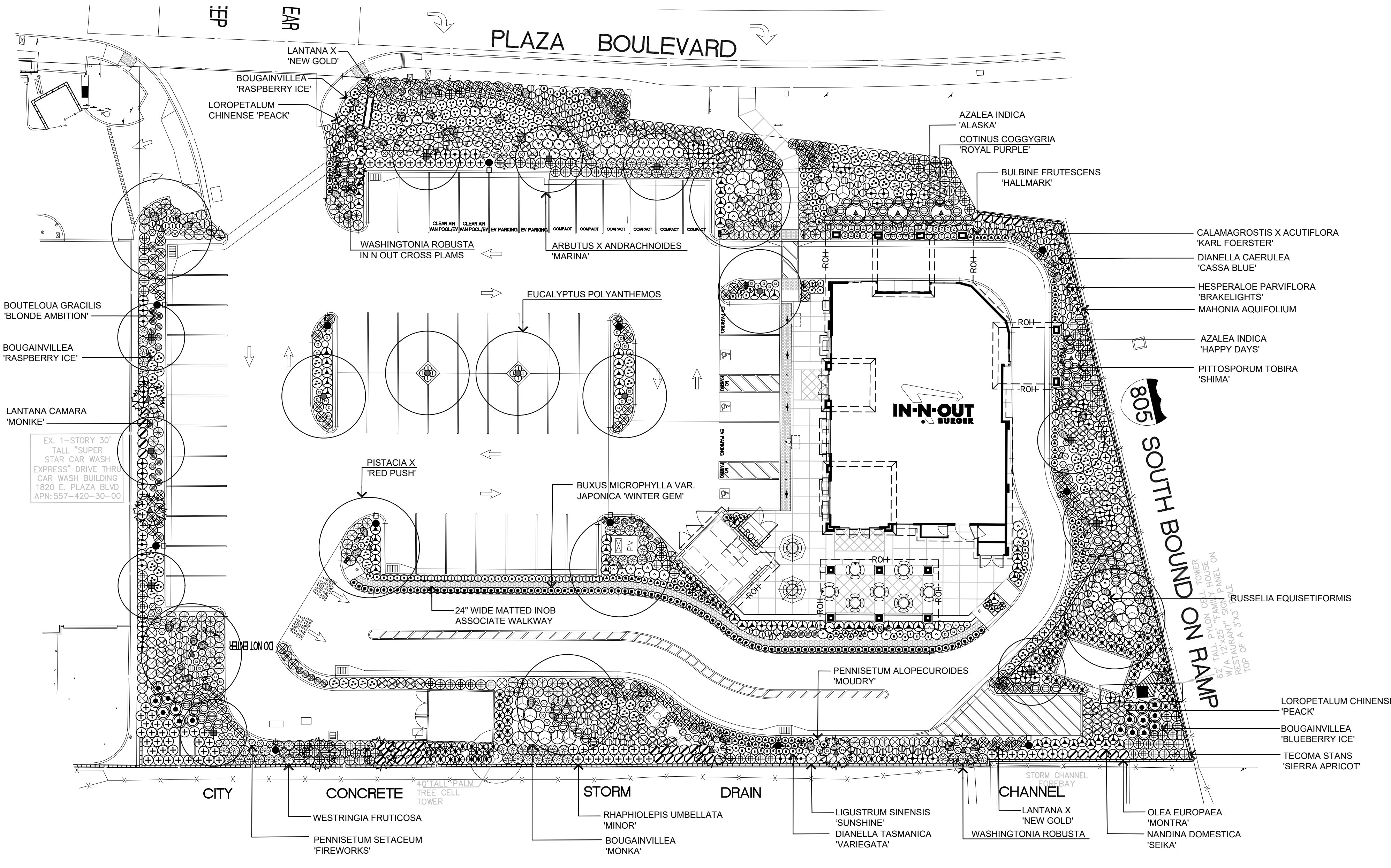
CIVIL ENGINEER:
MSL ENGINEERING, INC.
CIVIL ENGINEERS AND LAND SURVEYORS SPECIALIZING IN SITE DEVELOPMENT
301 NORTH SAN DIMAS AVENUE, SAN DIMAS, CA. 91773
(909) 305-2395 FAX (909) 305-2397

Mark S. Lamoureux
MARK S. LAMOUREUX
R.C.E. 38382
DATE: 05-18-2021

IN-N-OUT BURGER
1900 E. PLAZA BOULEVARD
NATIONAL CITY, CA 91950

CITY ENTITLEMENT NEW SITE PLAN

C30



PLAN VIEW

SCALE: 1" = 20'-0"

PLANTING LEGEND

SYMBOL	BOTANICAL NAME	COMMON NAME	SIZE	SPACING	QUANTITY	REMARKS	WUCOLS ZONE 3
TREES							
	ARBUS X ANDRACHNOIDES 'MARINA'	MARINA STRAWBERRY TREE	24" BOX	PER PLAN	+/- 10	STANDARDS MATCHED	LOW
	PISTACIA X 'RED PUSH'	RED PUSH PISTACHE	24" BOX	PER PLAN	+/- 7	STANDARDS MATCHED	LOW
	WASHINGTONIA ROBUSTA	MEXICAN FAN PALM	15' CBT	PER PLAN	+/- 7	SKIN TRUNKS TO INDUSTRY STANDARD DOCUMENT ANSI Z60.1	LOW
	COTINUS COGGYGRIA 'ROYAL PURPLE'	ROYAL PURPLE SMOKE TREE	24" BOX	PER PLAN	+/- 4	STANDARDS MATCHED	LOW
	EUCALYPTUS POLYANTHEMOS	SILVER DOLLAR GUM	24" BOX	PER PLAN	+/- 5	STANDARDS MATCHED	LOW
	WASHINGTONIA ROBUSTA IN N OUT CROSS PLAMS	MEXICAN FAN PALM	20' CBT	PER PLAN	+/- 2	SKIN TRUNKS TO INDUSTRY STANDARD DOCUMENT ANSI Z60.1	LOW
SHRUBS							
	AZALEA INDICA 'ALASKA'	ALASKA AZALEA	5 GALLON	24" O.C.	+/- 20	TRIANGLE SPACING MED	
	AZALEA INDICA 'HAPPY DAYS'	HAPPY DAYS AZALEA	5 GALLON	24" O.C.	+/- 22	TRIANGLE SPACING MED	
	BUXUS MICROPHYLLO VAR. JAPONICA 'WINTER GEM'	WINTER GEM BOXWOOD	5 GALLON	24" O.C.	+/- 98	TRIANGLE SPACING LOW	
	BULBINE FRUTESCENS 'HALLMARK'	'HALLMARK' BULBINE	1 GALLON	24" O.C.	+/- 111	TRIANGLE SPACING LOW	
	BOULEOUA GRACILIS 'BLONDE AMBITION'	BLONDE AMBITION BLUE GRAMA GRASS	5 GALLON	24" O.C.	+/- 52	TRIANGLE SPACING LOW	
	CALAMAGROSTIS X ACUTIFLORA 'KARL FOERSTER'	FEATHER REED GRASS	5 GALLON	36" O.C.	+/- 70	TRIANGLE SPACING LOW	
	DIANELLA TASMANICA 'VARIEGATA'	VARIEGATED FLAX LILY	5 GALLON	24" O.C.	+/- 107	TRIANGLE SPACING LOW	
	DIANELLA CAERULEA 'CASSA BLUE'	BLUE FLAX LILY	5 GALLON	24" O.C.	+/- 81	TRIANGLE SPACING LOW	
	HESPERALOE PARVIFLORA 'BRAKELIGHTS'	BRAKELIGHTS RED YUCCA	5 GALLON	24" O.C.	+/- 139	TRIANGLE SPACING LOW	
	LIGUSTRUM SINENSIS 'SUNSHINE'	SUNSHINE LIGUSTRUM	5 GALLON	36" O.C.	+/- 30	TRIANGLE SPACING LOW	
	LOROPETALUM CHINENSE 'PEACK'	PURPLE PIXIE DWARF WEEPING FRINGE FLOWER	5 GALLON	36" O.C.	+/- 165	TRIANGLE SPACING LOW	
	MAHONIA AQUIFOLIUM	OREGON GRAPE	5 GALLON	36" O.C.	+/-105	TRIANGLE SPACING LOW	
	NANDINA DOMESTICA 'SEIKA'	OBSESSION NANDINA	5 GALLON	36" O.C.	+/- 63	TRIANGLE SPACING LOW	
	OLEA EUROPAEA 'MONTRA'	LITTLE OLLIE DWARF OLIVE	5 GALLON	36" O.C.	+/- 42	TRIANGLE SPACING LOW	
	PENNISETUM SETACEUM 'FIREWORKS'	FIREWORKS FOUNTAIN GRASS	5 GALLON	24" O.C.	+/- 72	TRIANGLE SPACING LOW	
	PENNISETUM ALOPECUROIDES 'BLACK FLOWERING FOUNTAIN GRASS'	BLACK FLOWERING FOUNTAIN GRASS	5 GALLON	24" O.C.	+/- 64	TRIANGLE SPACING LOW	
	PITTOSPORUM TOBIRA 'SHIMA'	CREME DE MINT DWARF PITTOSPORUM	5 GALLON	36" O.C.	+/- 74	TRIANGLE SPACING LOW	
	RHAPHIOLEPIS UMBELLATA 'MINOR'	DWARF YEDDO RHAPHIOLEPIS	5 GALLON	36" O.C.	+/- 92	TRIANGLE SPACING MED	
	RUSSELLIA EQUISETIFORMIS	CORAL FOUNTAIN	5 GALLON	36" O.C.	+/- 62	TRIANGLE SPACING MED	
	TECOMA STANS 'SIERRA APRICOT'	SIERRA APRICOT ESPERANZA	5 GALLON	36" O.C.	+/- 124	TRIANGLE SPACING LOW	
	WESTRINGIA FRUTICOSA	BLUE GEM WESTRINGIA	5 GALLON	36" O.C.	+/- 90	TRIANGLE SPACING LOW	
GROUNDCOVER							
	BOUGAINVILLEA 'MONKA'	OO-LA-LA BOUGAINVILLEA	5 GALLON	48" O.C.	+/- 36	TRIANGLE SPACING LOW	
	BOUGAINVILLEA 'BLUEBERRY ICE'	BLUEBERRY ICE BOUGAINVILLEA	5 GALLON	48" O.C.	+/- 16	TRIANGLE SPACING LOW	
	BOUGAINVILLEA 'RASPBERRY ICE'	RASPBERRY ICE BOUGAINVILLEA	5 GALLON	36" O.C.	+/- 133	TRIANGLE SPACING LOW	
	LANTANA X 'NEW GOLD'	NEW GOLD LANTANA	1 GALLON	36" O.C.	+/- 169	TRIANGLE SPACING LOW	
	LANTANA CAMARA 'MONIKE'	TEENIE GENIE	1 GALLON	36" O.C.	+/- 116	TRIANGLE SPACING LOW	

- NOTE:
- CONTRACTOR SHALL CONTACT IN-N-OUT PERSONNEL FOR FIELD LOCATION OF SAID BOULDERS. REFER TO BOULDER DETAIL.
 - QUANTITIES SHOWN ARE APPROXIMATE. CONTRACTOR SHALL VERIFY COUNT AND ADJUST BASED ON ACTUAL FIELD CONDITIONS AND SIZE OF PLANTERS.
 - ALL PLANT MATERIAL SHALL BE REVIEWED AND APPROVED BY IN-N-OUT REP. AND LANDSCAPE ARCHITECT.
 - ALIGN TREES WITH PARKING STALLS STRIPING.
 - CONTRACTOR SHALL INSTALL 2 AERATION TUBES, 48" IN LENGTH FOR ALL TREES INCLUDING PALMS. INSTALL 4 DEVICES FOR EXISTING TREES GREATER THAN 6" TRUNK DIAMETER.

LEGEND - SITE NOTATIONS

24' WIDE MATTED INOB ASSOCIATE WALKWAY CONSISTING OF APPROXIMATELY 370 SQUARE FEET.

LANDSCAPE BOULDER LEGEND

BOULDER #	SIZE	TYPE/ COLOR/ MANUFACTURER
1	1' X 2' X 3'	DECORATIVE STONE SOLUTIONS BOULDER/ COLOR: AMBER CLOUD PH: 800-699-1878
2	2' X 4' X 3'	DECORATIVE STONE SOLUTIONS BOULDER/ COLOR: AMBER CLOUD PH: 800-699-1878
3	3' X 3' X 3'	DECORATIVE STONE SOLUTIONS BOULDER/ COLOR: AMBER CLOUD PH: 800-699-1878

BOULDER PLACEMENT (GROUPINGS) SHALL BE REVIEWED BY THE LANDSCAPE ARCHITECT PRIOR TO PLACEMENT.

LANDSCAPE AREA CALCULATION NOTE:

REQUIRED PARKING LOT INTERIOR LANDSCAPE AREA WITHIN PROPERTY (20%) = 11,083 S.F.
 TOTAL INSTALLED TURF AREA: 0 S.F. (0%)
 TOTAL INSTALLED PLANTING (SHRUB/GROUNDCOVER) AREA: 14,804 S.F. (100%)
 TOTAL LANDSCAPE AREA PROVIDED WITHIN PROPERTY = 14,804 S.F. (100%)

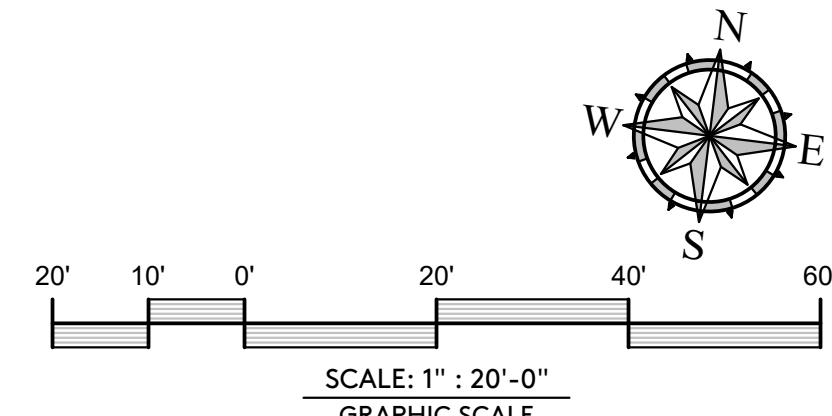
AGRONOMIC SOILS REPORT REQUIREMENT
 AFTER MAJOR GRADING OPERATIONS ARE COMPLETED, CONTRACTOR SHALL OBTAIN SOIL SAMPLES FROM MIN 6" DEPTH AND SUBMIT TO AN APPROVED LABORATORY FOR ANALYSIS AND RECOMMENDATIONS. OBTAIN A MINIMUM OF 1 SAMPLE PER ACRE AND 1 SAMPLE AFTER IMPLEMENTATION OF FIRST REPORT FOR VERIFICATION SOIL MEETS SOILS LAB STANDARDS. REPORTS MUST BE SUBMITTED TO LANDSCAPE ARCHITECT, CITY AND OWNERS REP. FOR REVIEW AND APPROVAL.

TREE ROOTBARRIER - FIBERWEB BIO BARRIER:

- CONTRACTOR SHALL INSTALL TREE ROOT BARRIERS FOR ALL TREES WITHIN 6' OF CONCRETE EDGE. INSTALL THE 24" VERSION AND SHALL BE CONTINUOUS FOR 10' ON EITHER SIDE OF TREE.
- STREET TREES AND OTHER TREES LOCATED WITHIN 10- FEET OF THE PUBLIC RIGHT-OF-WAY (WITH THE EXCEPTION OF PALM TREES) SHALL BE PROVIDED WITH A BIO BARRIER.

TITLE 23 - WATER EFFICIENT LANDSCAPE COMPLIANCE NOTE
 I HAVE COMPLIED WITH THE CRITERIA OF THE WATER EFFICIENT LANDSCAPE ORDINANCE (STATE OF CALIFORNIA TITLE 23, DIVISION 2, CHAPTER 2.7) AND APPLIED THEM ACCORDINGLY FOR THE EFFICIENT USE OF LANDSCAPE DESIGN PLAN.
 BRANDON PETRUNIO, DATE: MAY 14, 2021
 RLA 5894:

LANDSCAPE IRRIGATION INTENT:
 IT IS THE INTENT TO PROVIDE AN IRRIGATION DESIGN UTILIZING DRIP IRRIGATION SYSTEM FOR THE ENTIRE SITE BURIED A CONSTANT 4" BELOW FINISH GRADE AND STAPLED DOWN @ 5' INTERVALS FOR ADDED PROTECTION. THE IRRIGATION SYSTEM SHALL BE CONTROLLED BY A SMART CONTROLLER WITH ONSITE WEATHER SENSOR AND REMOTE OPERATION THROUGH THE INTERNET FROM CENTRAL LOCATION. CONTROLLER SHALL BE A TYPE WHICH AUTOMATICALLY ADJUSTS RUNTIMES AND FREQUENCIES BASED, NOT ONLY ON HISTORICAL ET, BUT ACTUAL ONSITE WEATHER CONDITIONS.



LANDSCAPE ARCHITECT:

BPA ARCHITECTS
 BRANDON PETRUNIO & ASSOCIATES, INC.
 LANDSCAPE ARCHITECTS
 Design Studio: 301 N. San Dimas Ave., San Dimas, CA. 91773
 Corp Office: 15699 Cherry Leaf Lane, Fontana, CA. 92336
 T: (424) 235-8940, M: (951) 312-9943, E: brandon@bpalas.com

IN-N-OUT BURGER

DEVELOPER:
 IN-N-OUT BURGER
 13502 HAMBURGER LANE
 BALDWIN PARK, CA 91706
 CONTACT: CASSIE YEE
 PHONE: 626 813-8226

Underground Service Alert
 Call: Toll Free 811
 TWO WORKING DAYS BEFORE YOU DIG

REVISIONS

△

△

△

△

△

GH A PROJECT NO. ---

GH A
 Architecture/Development
 14901 Quorum Drive
 Suite 300
 Dallas Texas 75254
 Ph: (972) 239-8884
 Fax: (972) 239-5054

CIVIL ENGINEER:
MSL ENGINEERING, INC.
 CIVIL ENGINEERS AND LAND SURVEYORS SPECIALIZING IN SITE DEVELOPMENT
 301 NORTH SAN DIMAS AVENUE, SAN DIMAS, CA. 91773
 (909) 305-2395 FAX (909) 305-2397
 Mark S. Lamoureux
 MARK S. LAMOUREUX R.C.E. 38382 DATE 05-18-2021

REG. PROFESSIONAL ENGINEER
 MARK S. LAMOUREUX
 No. 38382
 CIVIL
 STATE OF CALIFORNIA

IN-N-OUT BURGER
 1900 E. PLAZA BOULEVARD
 NATIONAL CITY, CA 91950

CITY ENTITLEMENT LANDSCAPE PLANTING PLAN

LPP.1



"GOD BLESS AMERICA"

13502 HAMBURGER LANE
BALDWIN PARK, CA 91706

NATIONAL CITY, CA

1900 E. PLAZA DRIVE

WHITE BELLY BAND WITH SILVER REVEALS AND COOLEY BRITE AWNINGS

ISSUED: 03/03/20



"GOD BLESS AMERICA"

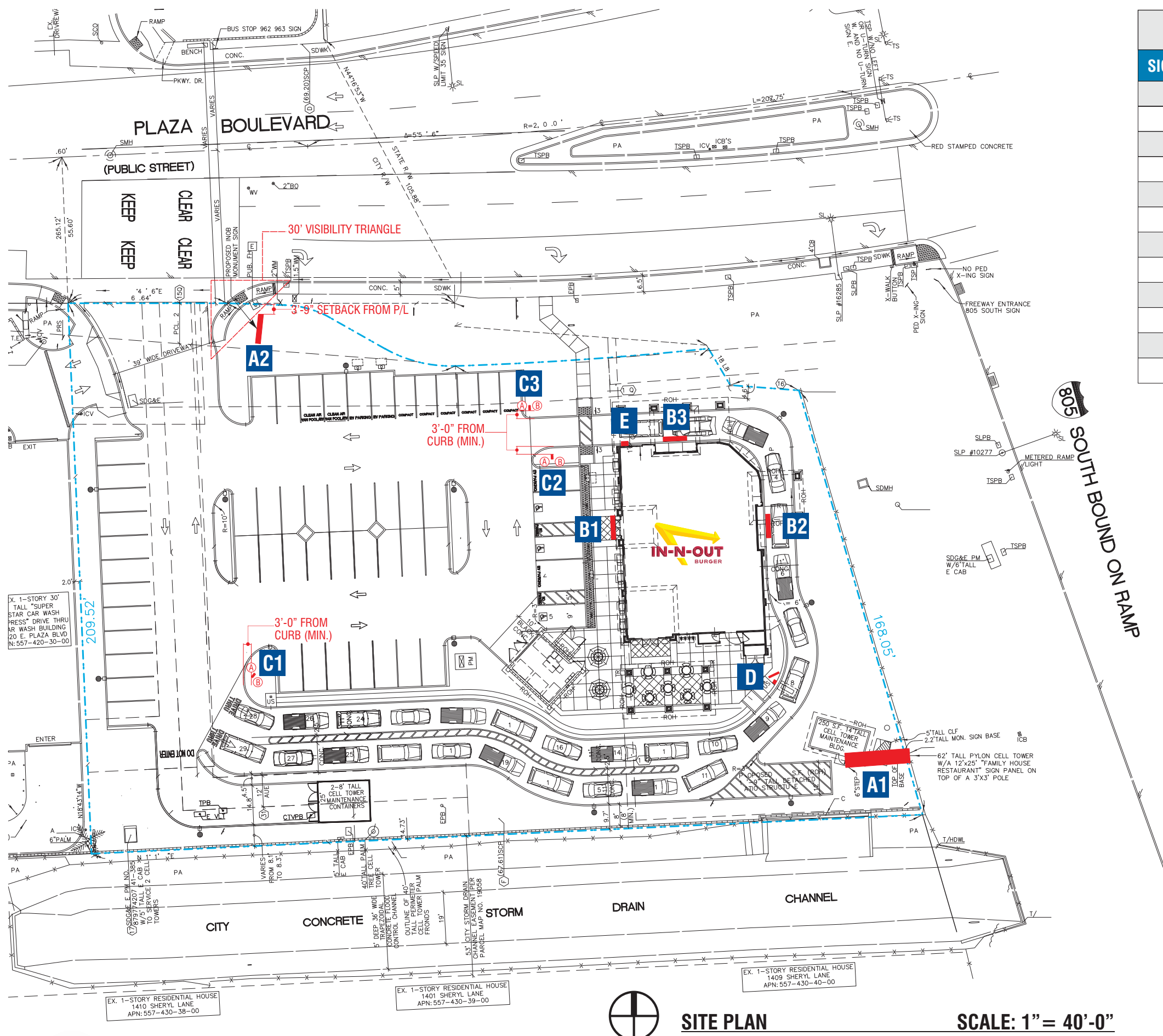
13502 HAMBURGER LANE
BALDWIN PARK, CA 91706

NATIONAL CITY, CA

1900 E. PLAZA DRIVE

WHITE BELLY BAND WITH SILVER REVEALS AND COOLEY BRITE AWNINGS

ISSUED: 03/03/20



SITE PLAN

SCALE: 1" = 40'-0"

SIGN LEGEND				
SIGN #	DESCRIPTION	SIGN TYPE	SF	QTY
A1	PYLON SIGN	INO-RF-FL-144X288	288.0	1
A2	MONUMENT SIGN	INO-MON-36X108X96	83.12	1
B1	WALL SIGN	INO-WS-75x126	65.8	1
B2	WALL SIGN	INO-WS-75x126	65.8	1
B3	WALL SIGN	INO-WS-75x126	65.8	1
C1	DIRECTIONAL SIGN (DT)	INO-DIR-18x24x36	N/A	1
C2	DIRECTIONAL SIGN (TY/DNE)	INO-DIR-18x24x36	N/A	1
C3	DIRECTIONAL SIGN (TY/DNE)	INO-DIR-18x24x36	N/A	1
D	MENU BOARD	IN-MB-54x51x79	N/A	1
E	ADDRESS NUMERALS	INO-CL-PL-12-ADDRESS-1900	N/A	1
F	LED TUBE WALL ACCENT	INO-LED BORDER TUBE	N/A	1
G	INTERIOR NEON WALL SIGN	INO-QYCT-NEON-18x57	N/A	1



4444 Federal Blvd San Diego, CA 92102
(619) 527-6100 signtech.com

In-N-Out
1900 E. Plaza Blvd. National City, CA 91950

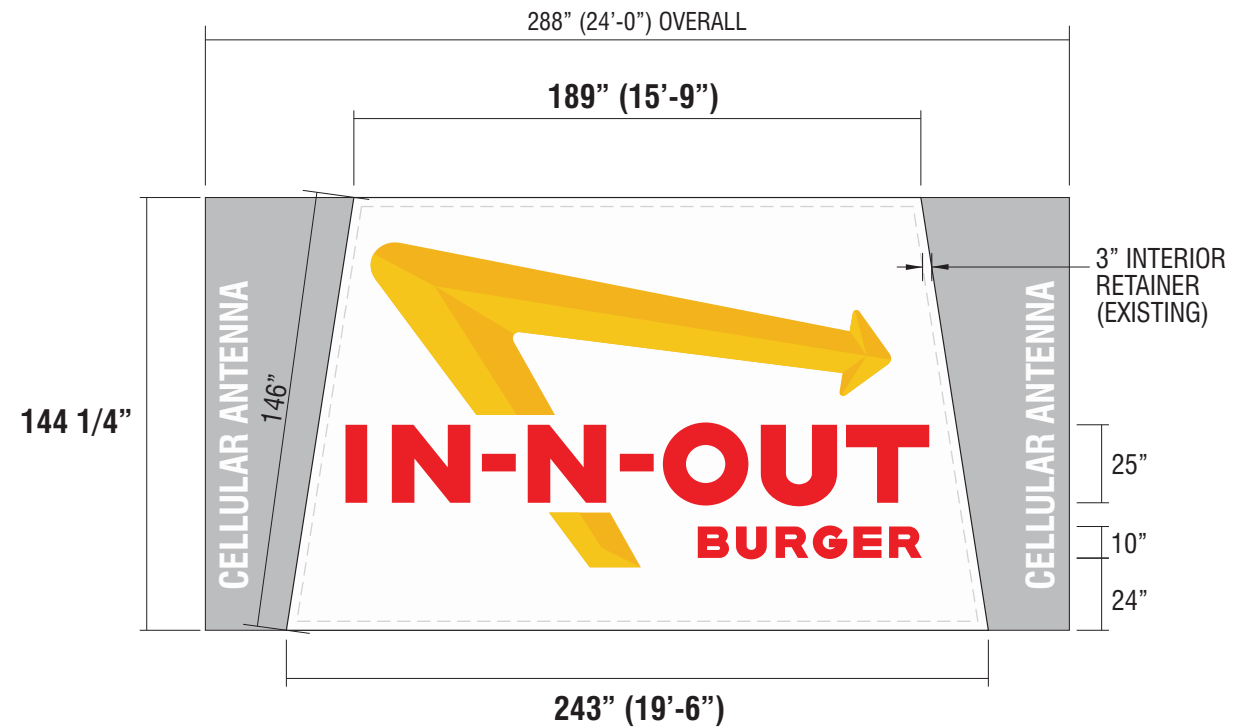
Sales: Bob McCarter
Coordinator: Garry Wilcox
Design: Thomsen
Engineering:

date: 03/05/21
drawing: 21-00348 rev:2-03/23/21
quote:
project ID: IN-N-OUT_PLAZA_1

This design is the exclusive property of Signtech and cannot be reproduced in whole or in part, without their prior written approval



EXISTING CONDITIONS



SCALE: 3/16" = 1'-0"

A1 SIGNTYPE INO-RF-FL-144X288

REFACE ONE (1) EXISTING D/F INTERNALLY ILLUMINATED PYLON SIGN
'IN-N-OUT' FACES: PANAFLEX FACES W/ FIRST SURFACE VINYL GRAPHICS
RETAINERS: INSTALL NEW RETROFIT FLEX FACE RETAINERS
ILLUMINATION: RETROFIT EXISTING CABINET WITH LED ILLUMINATION

MATERIALS

M2 WHITE PANAFLEX

VINYL

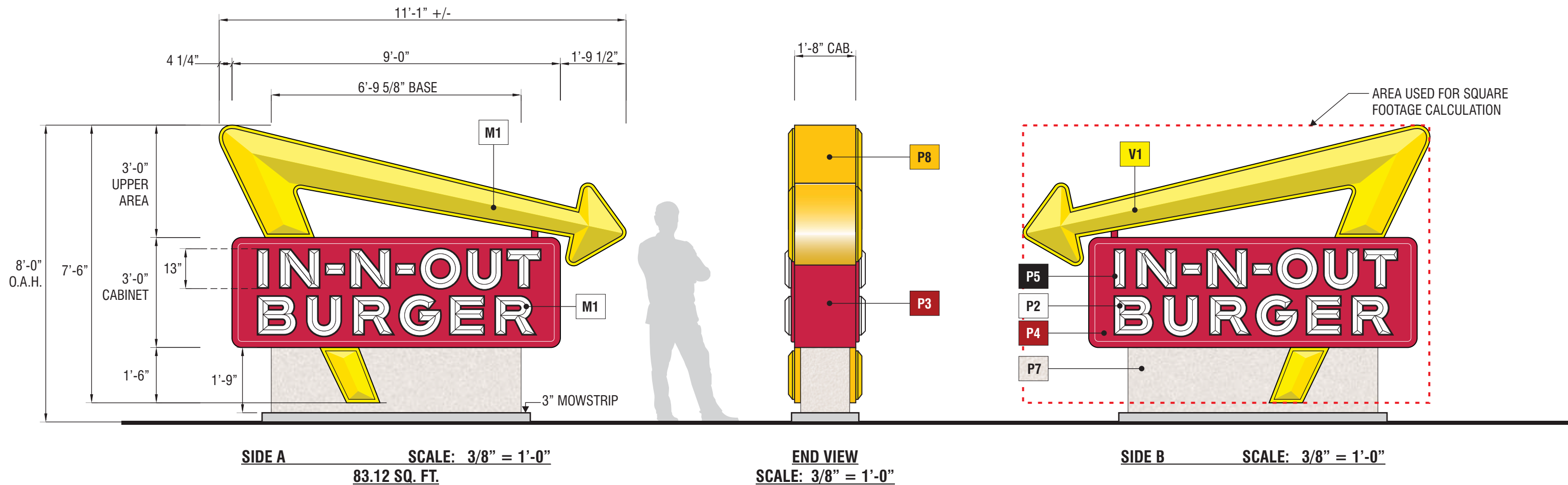
V2 3M 3630-235 'AUTUMN YELLOW' TRANSLUCENT

V4 3M 3630-33 'RED' TRANSLUCENT

V10 3M 3630-125 'GOLDEN YELLOW' TRANSLUCENT



PROPOSED SIGN FACE



A2 SIGNTYPE INO-MON-36X108X96

MANUFACTURE AND INSTALL ONE (1) D/F INTERNALLY ILLUMINATED MONUMENT SIGN

BASE: FABRICATED ALUMINUM

LETTER CABINET: FABRICATED ALUMINUM W/ FABRICATED RETAINERS AND FORMED ACRYLIC FACES WITH SECOND SURFACE PAINTED GRAPHICS AND LED ILLUMINATION - SLOAN SIGN BOX II 6500K DUAL SIDED

ARROW: FABRICATED CHANNEL WITH FORMED CLEAR MODIFIED ACRYLIC FACE
ILLUMINATION: 4000k WHITE LEDs

MATERIALS

M1 CLEAR MODIFIED ACRYLIC

VINYL

V1 3M VINYL #3630-235 'AUTUMN YELLOW'

PAINT

P2 WHITE

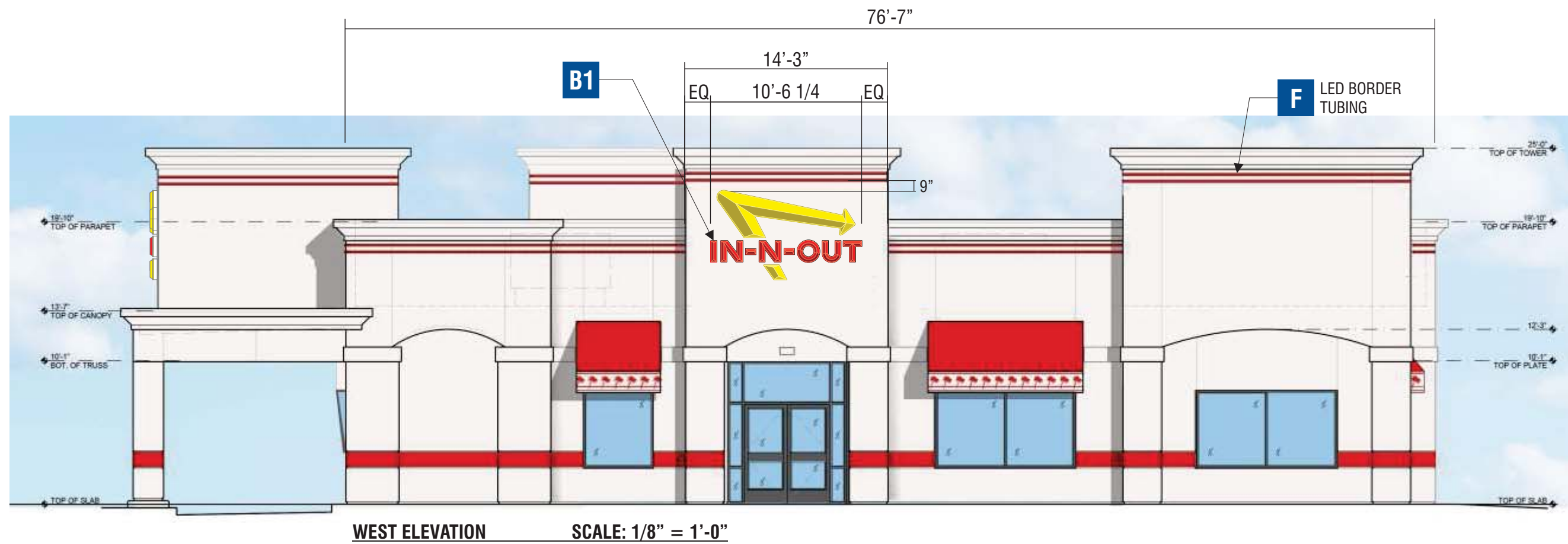
P3 TO MATCH 'IN-N-OUT RED' WITH HIGH GLOSS FINISH

P4 INO 443 RED / 25% CLEAR

P5 BLACK

P7 PAINTED TO MATCH DUNN EDWARDS #SP-514 'BONE CHINA' W/ MEDIUM TEXCOTE FINISH

P8 PAINT TO MATCH MATTHEWS #MP4944 'YELLOW' WITH HIGH GLOSS FINISH



4444 Federal Blvd San Diego, CA 92102
(619) 527-6100 signtech.com

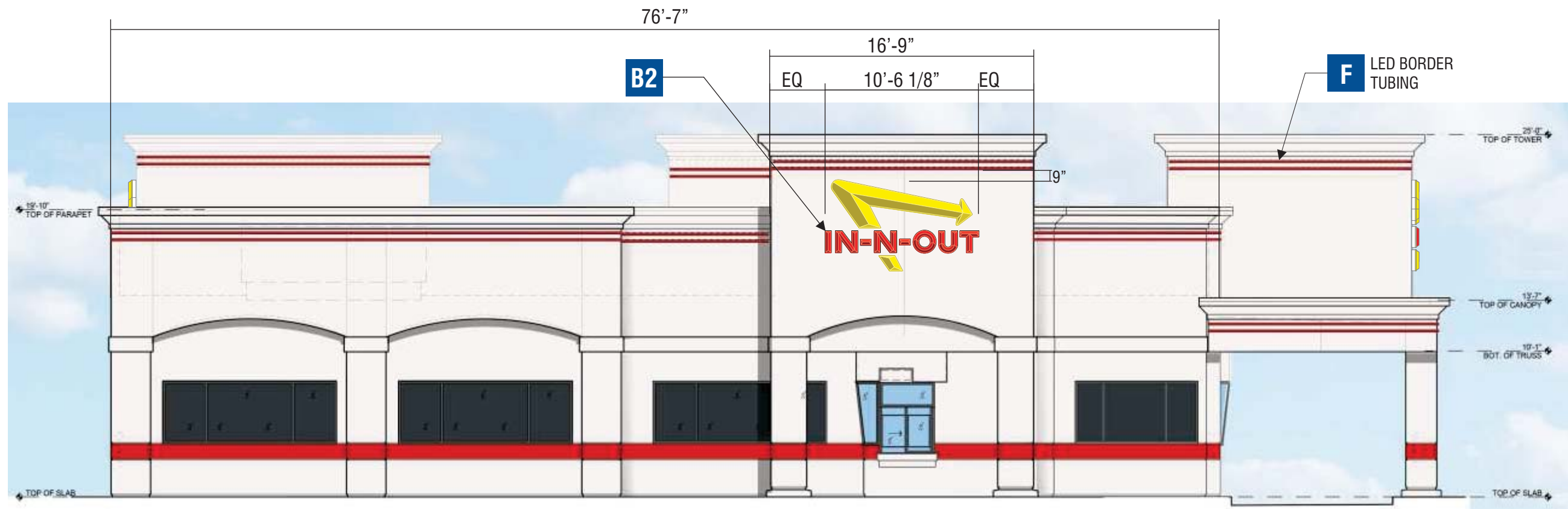
In-N-Out

1900 E. Plaza Blvd. National City, CA 91950

This design is the exclusive property of Signtech and cannot be reproduced in whole or in part, without their prior written approval

Sales: Bob McCarter
Coordinator: Garry Wilcox
Design: Thomsen
Engineering:

date: 03/05/21
drawing: 21-00348 rev:2-03/23/21
quote:
project ID: IN-N-OUT_PLAZA_1



EAST ELEVATION SCALE: 1/8" = 1'-0"



NORTH ELEVATION SCALE: 1/8" = 1'-0"



4444 Federal Blvd San Diego, CA 92102
(619) 527-6100 signtech.com

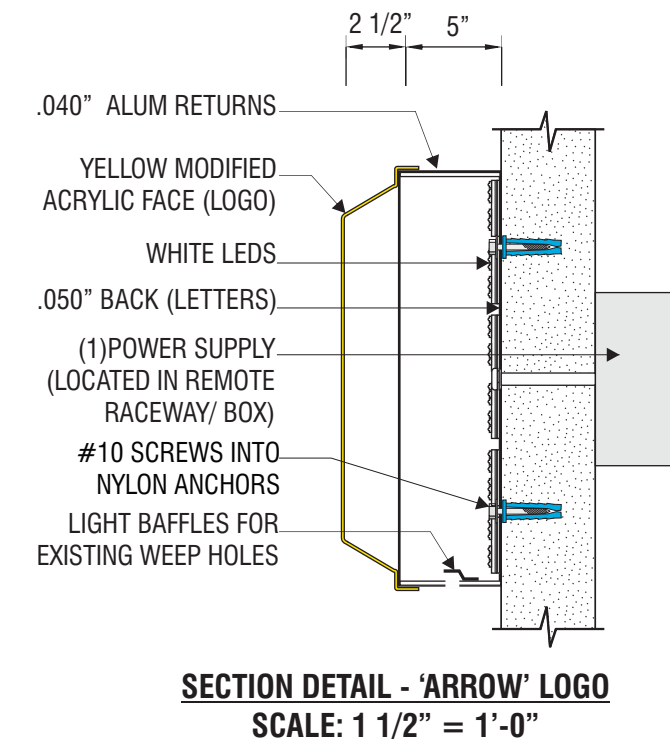
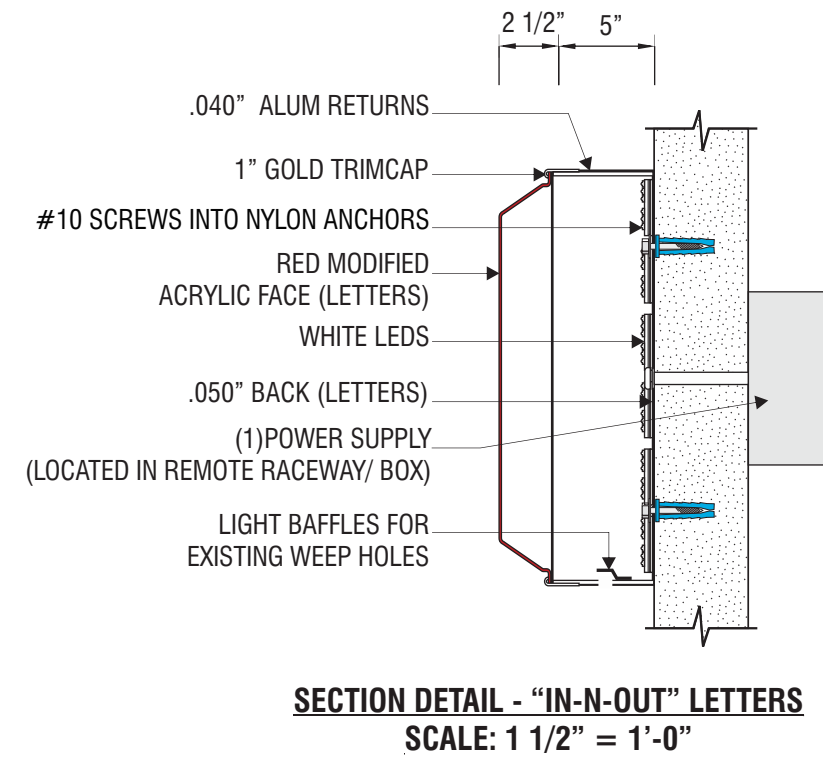
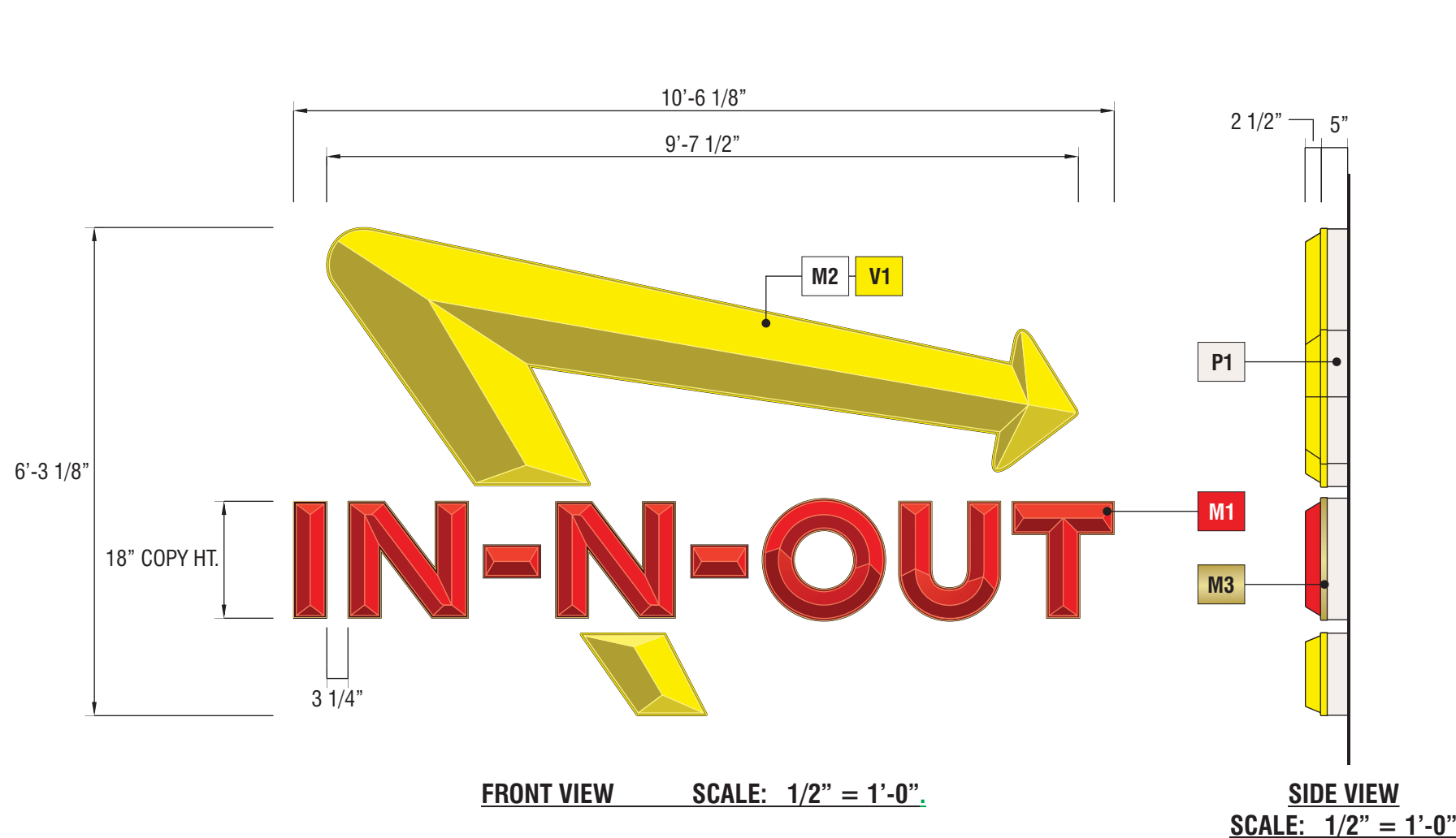
In-N-Out

1900 E. Plaza Blvd. National City, CA 91950

This design is the exclusive property of Signtech and cannot be reproduced in whole or in part, without their prior written approval

Sales: Bob McCarter
Coordinator: Garry Wilcox
Design: Thomsen
Engineering:

date: 03/05/21
drawing: 21-00348 rev:2-03/23/21
quote:
project ID: IN-N-OUT_PLAZA_1



B1 B2 B3 SIGNTYPE INO-WS-75x126

MANUFACTURE AND INSTALL THREE (3) SINGLE-FACED INTERNALLY ILLUMINATED CHANNEL LETTER WALL SIGNS

ARROW: FABRICATED CHANNEL WITH FORMED CLEAR MODIFIED ACRYLIC FACE
ILLUMINATION: 4000k WHITE LEDs

COPY: FABRICATED CHANNEL WITH FORMED RED ACRYLIC FACE
LED ILLUMINATION

INSTALLATION: FLUSH MOUNT TO WALL

MATERIALS

PAINT

VINYL

M1 RED ACRYLIC #211-1

P1 PAINTED TO MATCH DUNN EDWARDS #SP-514 'BONE CHINA' w/ SATIN FINISH

M2 CLEAR MODIFIED ACRYLIC

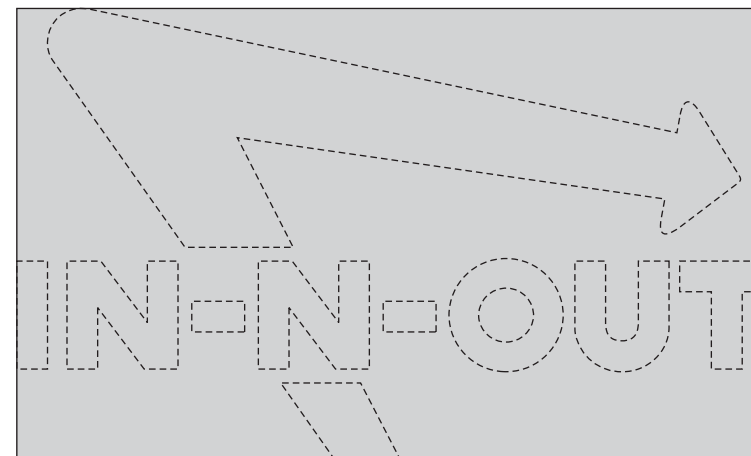
V1 3M VINYL #3630-235 'AUTUMN YELLOW'

M3 1" GOLD TRIMCAP

SQUARE FOOTAGE CALCULATIONS:

TOTAL SIGN AREA: 65.8 S.F.

NOTE: GRAY INDICATES CALCULATED AREA



4444 Federal Blvd San Diego, CA 92102
(619) 527-6100 signtech.com

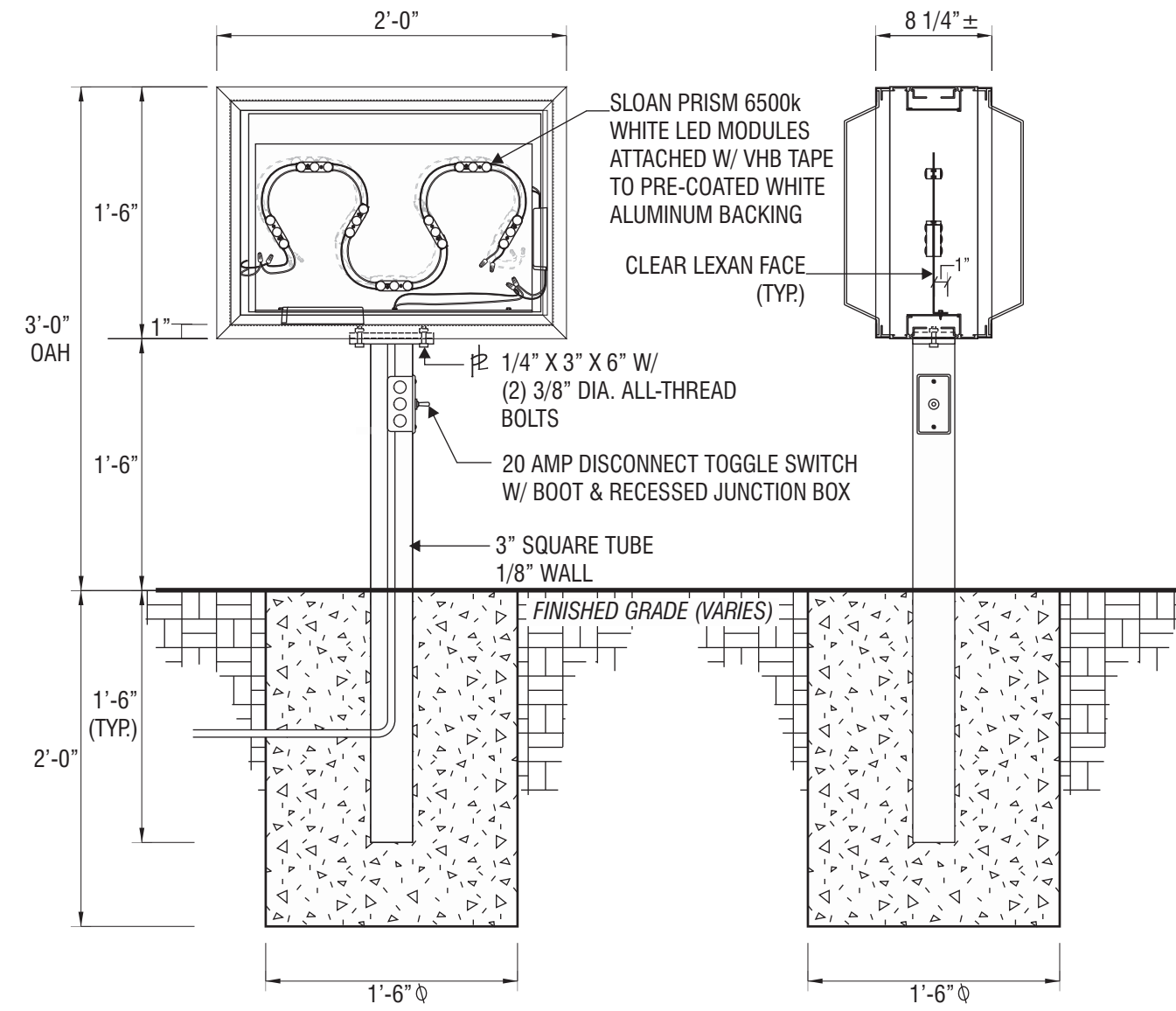
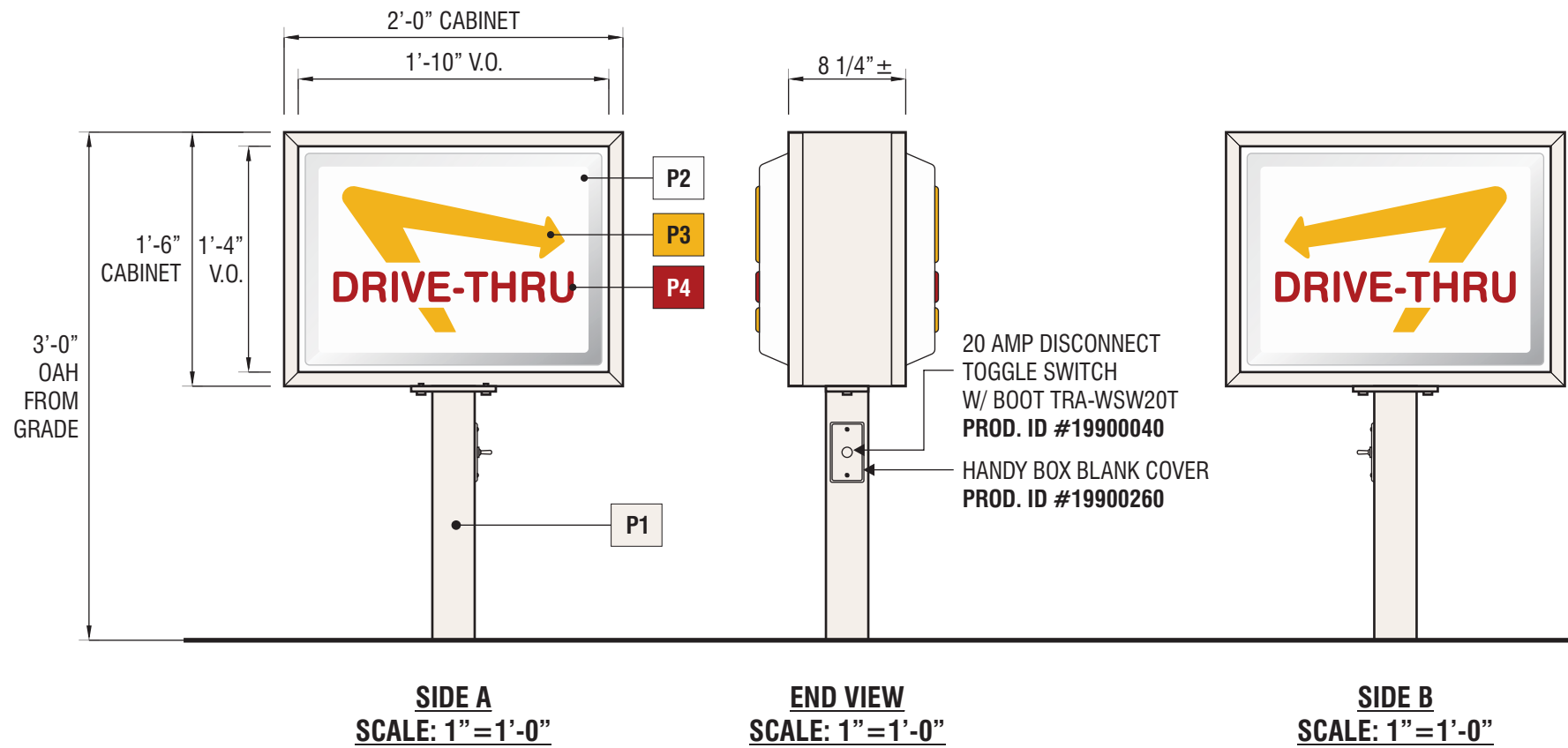
In-N-Out

1900 E. Plaza Blvd. National City, CA 91950

This design is the exclusive property of Signtech and cannot be reproduced in whole or in part, without their prior written approval

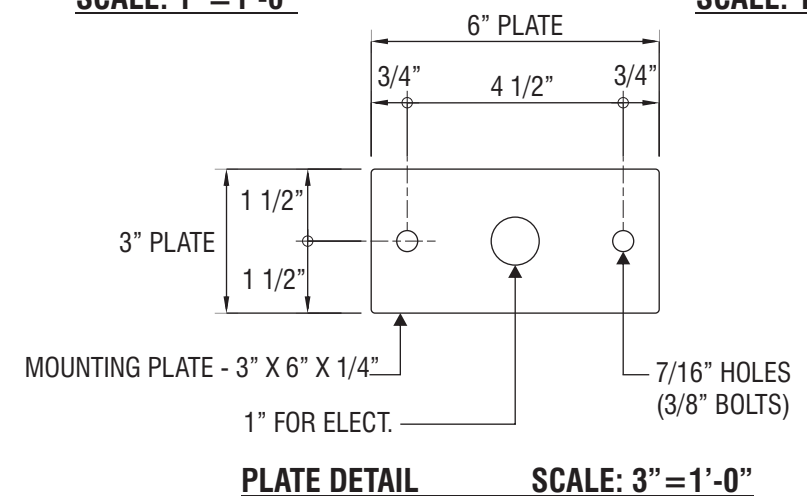
Sales: Bob McCarter
Coordinator: Garry Wilcox
Design: Thomsen
Engineering:

date: 03/05/21
drawing: 21-00348 **rev:** 2-03/23/21
quote:
project ID: IN-N-OUT_PLAZA_1



ELEVATION DETAIL VIEW
SCALE: 1"=1'-0"

SIDE DETAIL VIEW
SCALE: 1"=1'-0"



C1 SIGNTYPE INO-DIR-18x24x36

MANUFACTURE AND INSTALL ONE (1) DOUBLE-FACED INTERNALLY ILLUMINATED DIRECTIONAL SIGNS

FACES: PAN FORMED .093" CLEAR SG LEXAN WITH FORMED COPY & ARROW

CABINET: EXTRUDED ALUMINUM

POLE: 3" SQUARE TUBE WITH 1/8" WALL

ILLUMINATION: SLOAN PRISM 6500k WHITE LED MODULES

PAINT

P1 PAINTED TO MATCH DUNN EDWARDS #SP-514 'BONE CHINA' w/ SATIN FINISH

P2 INO WHITE

P3 TO MATCH 3M VINYL #3630-235 'AUTUMN YELLOW'

P4 INO 443 RED / 25% CLEAR



4444 Federal Blvd San Diego, CA 92102
(619) 527-6100 signtech.com

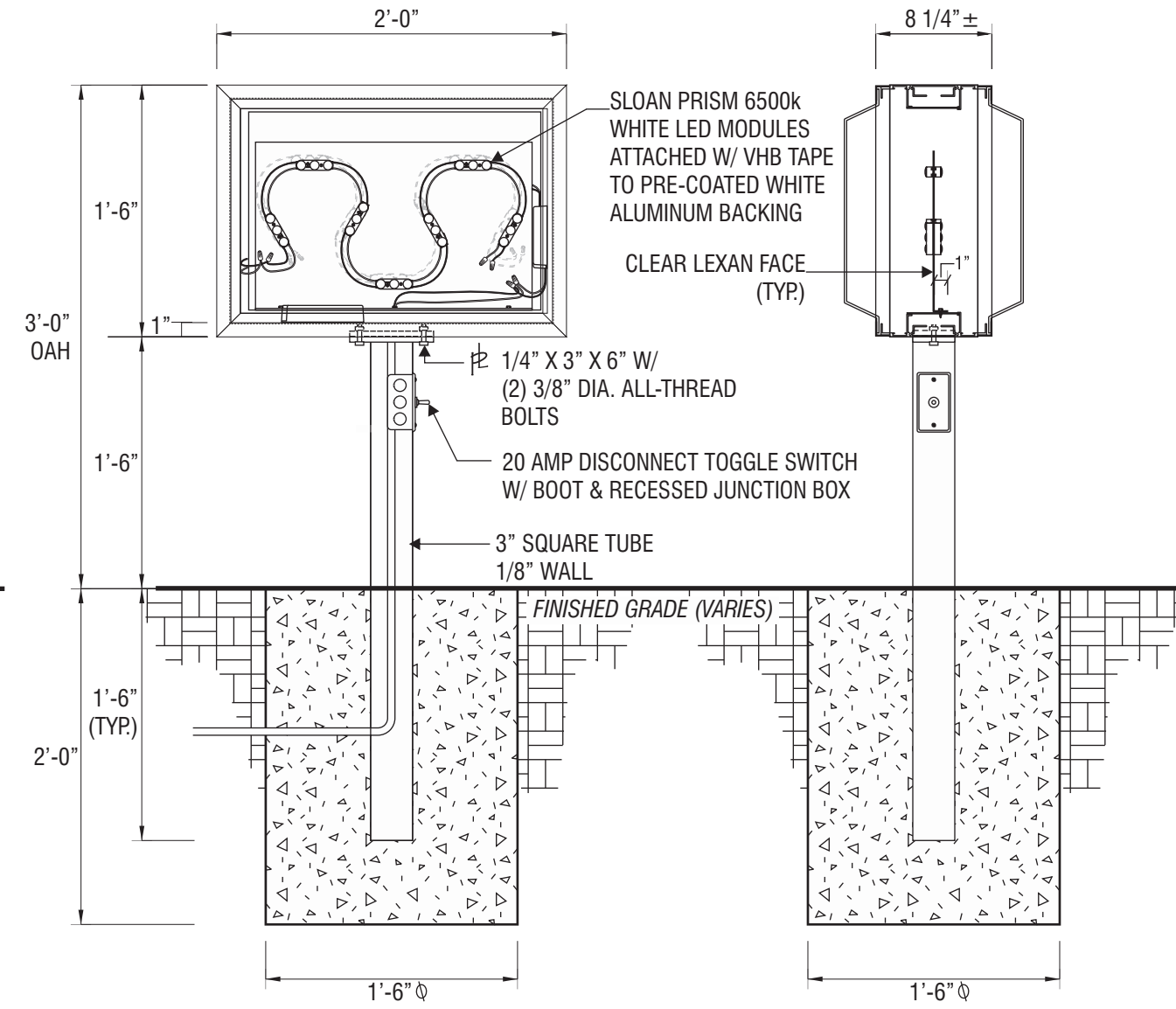
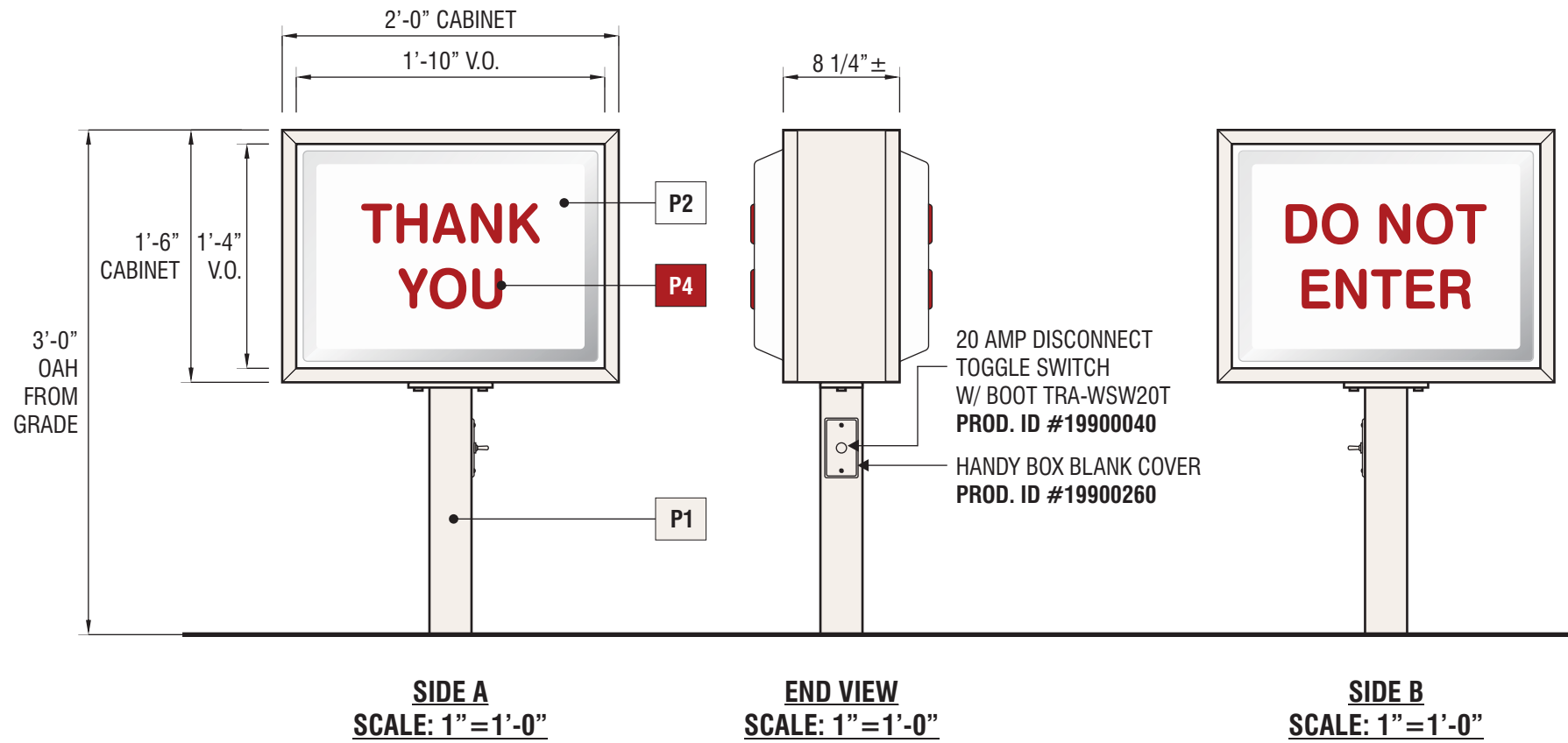
In-N-Out

1900 E. Plaza Blvd. National City, CA 91950

This design is the exclusive property of Signtech and cannot be reproduced in whole or in part, without their prior written approval

Sales: Bob McCarter
Coordinator: Garry Wilcox
Design: Thomsen
Engineering:

date: 03/05/21
drawing: 21-00348 rev:2-03/23/21
quote:
project ID: IN-N-OUT_PLAZA_1



ELEVATION DETAIL VIEW
SCALE: 1" = 1'-0"

SIDE DETAIL VIEW
SCALE: 1" = 1'-0"

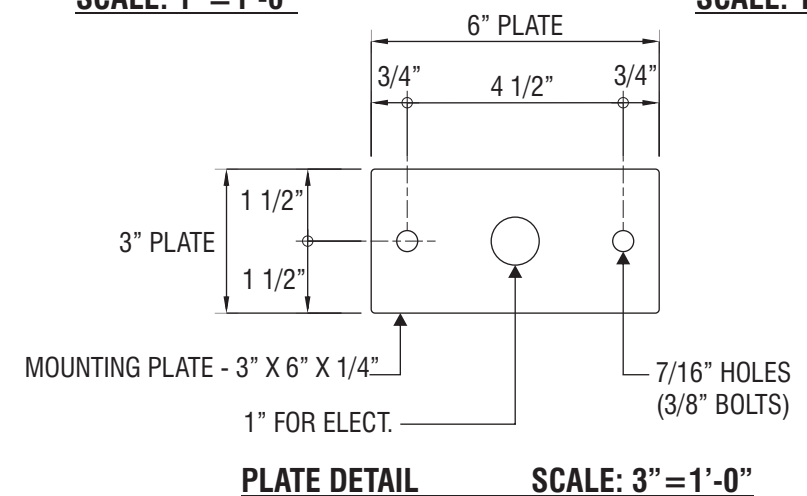


PLATE DETAIL SCALE: 3" = 1'-0"

C2 C3 SIGNTYPE INO-DIR-18x24x36

MANUFACTURE AND INSTALL TWO (2) DOUBLE-FACED INTERNALLY ILLUMINATED DIRECTIONAL SIGNS

FACES: PAN FORMED .093" CLEAR SG LEXAN WITH FORMED COPY

CABINET: EXTRUDED ALUMINUM

POLE: 3" SQUARE TUBE WITH 1/8" WALL

ILLUMINATION: SLOAN PRISM 6500k WHITE LED MODULES

PAINT

P1 PAINTED TO MATCH DUNN EDWARDS #SP-514 'BONE CHINA' w/ SATIN FINISH

P2 INO WHITE

P4 INO 443 RED / 25% CLEAR



4444 Federal Blvd San Diego, CA 92102
(619) 527-6100 signtech.com

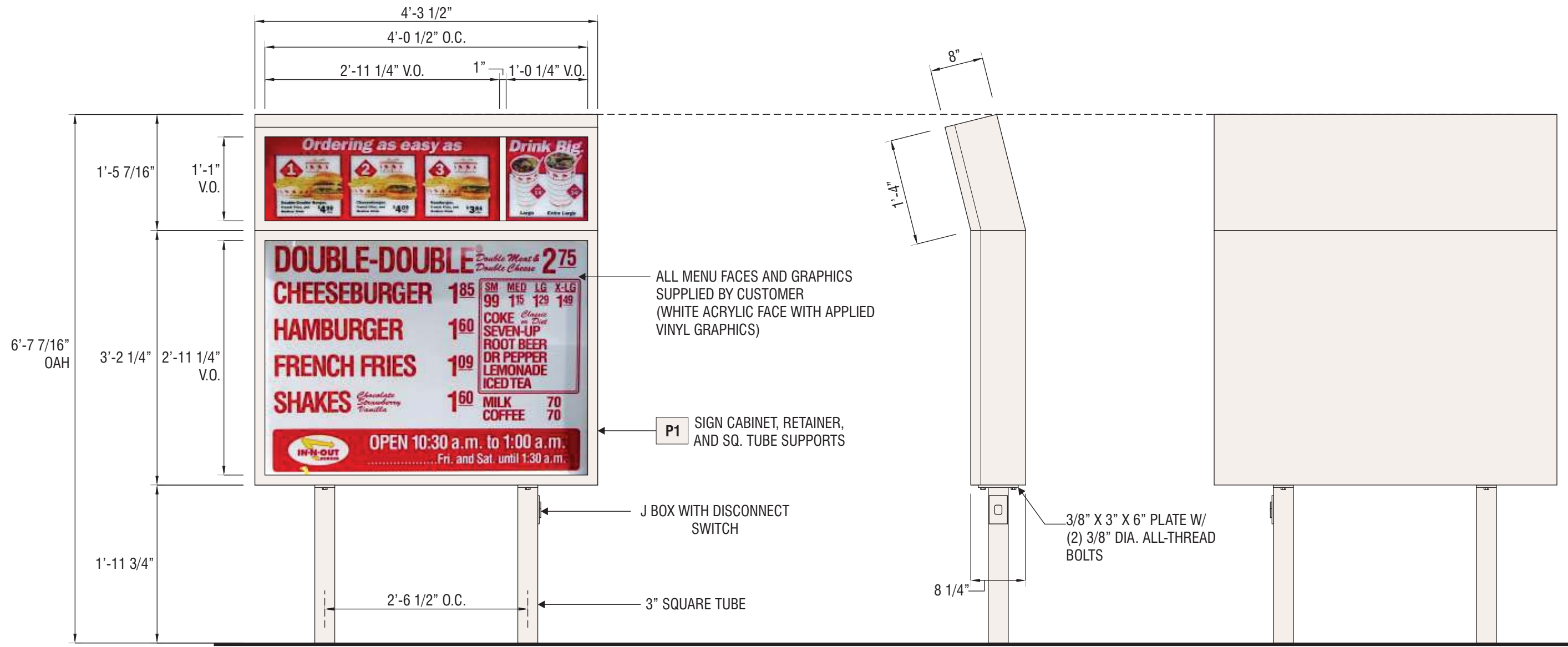
In-N-Out

1900 E. Plaza Blvd. National City, CA 91950

This design is the exclusive property of Signtech and cannot be reproduced in whole or in part, without their prior written approval

Sales: Bob McCarter
Coordinator: Garry Wilcox
Design: Thomsen
Engineering:

date: 03/05/21
drawing: 21-00348 rev:2-03/23/21
quote:
project ID: IN-N-OUT_PLAZA_1



FRONT VIEW SCALE: 3/4" = 1'-0"
19.9 SQ FT.

SIDE VIEW SCALE: 3/4" = 1'-0"

BACK VIEW SCALE: 3/4" = 1'-0"

D SIGNTYPE INO-MB-54x51x79

MANUFACTURE AND INSTALL ONE (1) SINGLE-FACED INTERNALLY ILLUMINATED MENU BOARD

CABINET: EXTRUDED ALUMINUM

FACES: WHITE ACRYLIC WITH FIRST SURFACE APPLIED GRAPHICS (BY OTHERS)

POLES: 3" SQUARE TUBE

ILLUMINATION: SLOAN SIGN BOX II SINGLE SIDED 5000K LEDs

PAINT

P1 PAINTED TO MATCH DUNN EDWARDS
#SP-514 'BONE CHINA' w/ SATIN FINISH



4444 Federal Blvd San Diego, CA 92102
(619) 527-6100 signtech.com

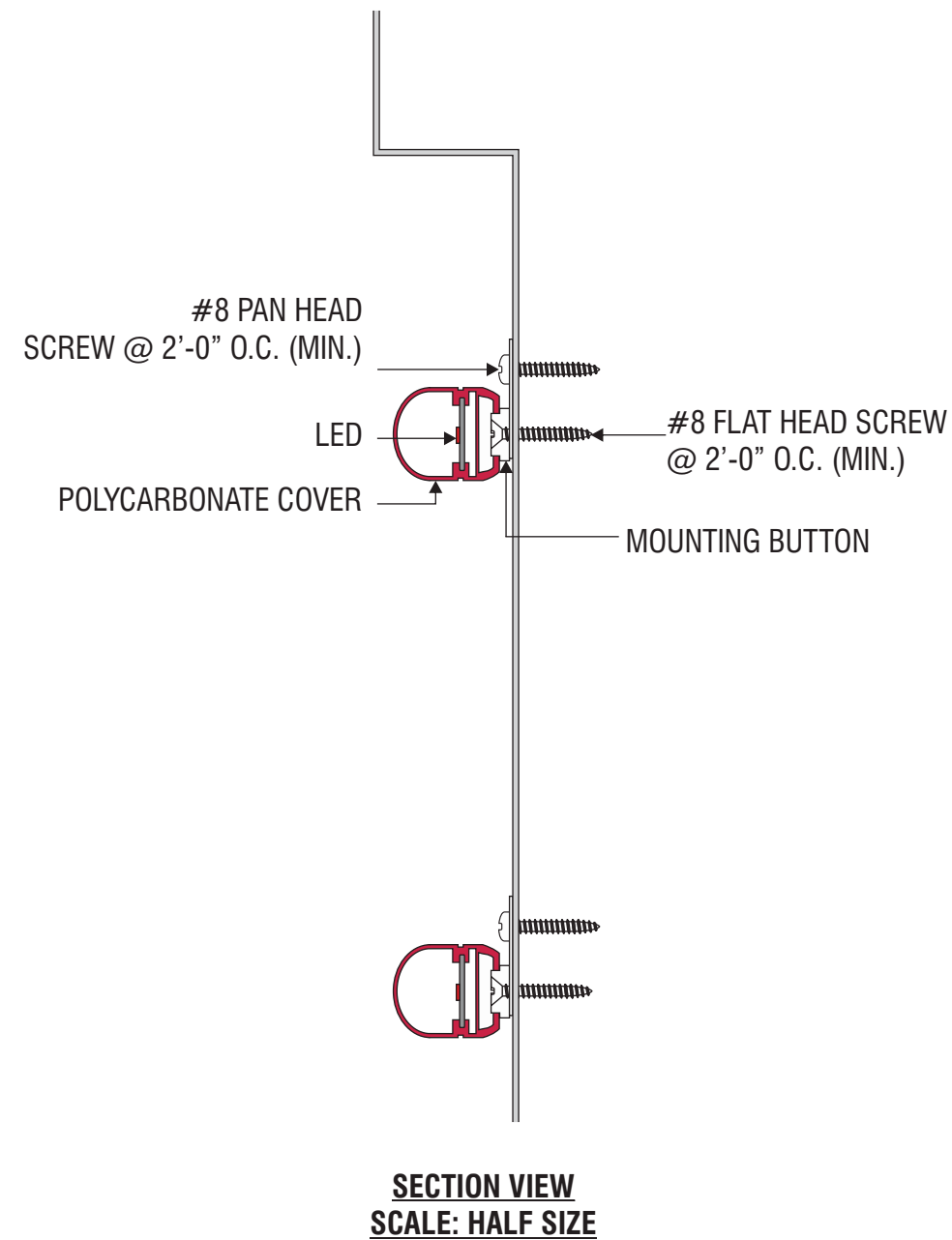
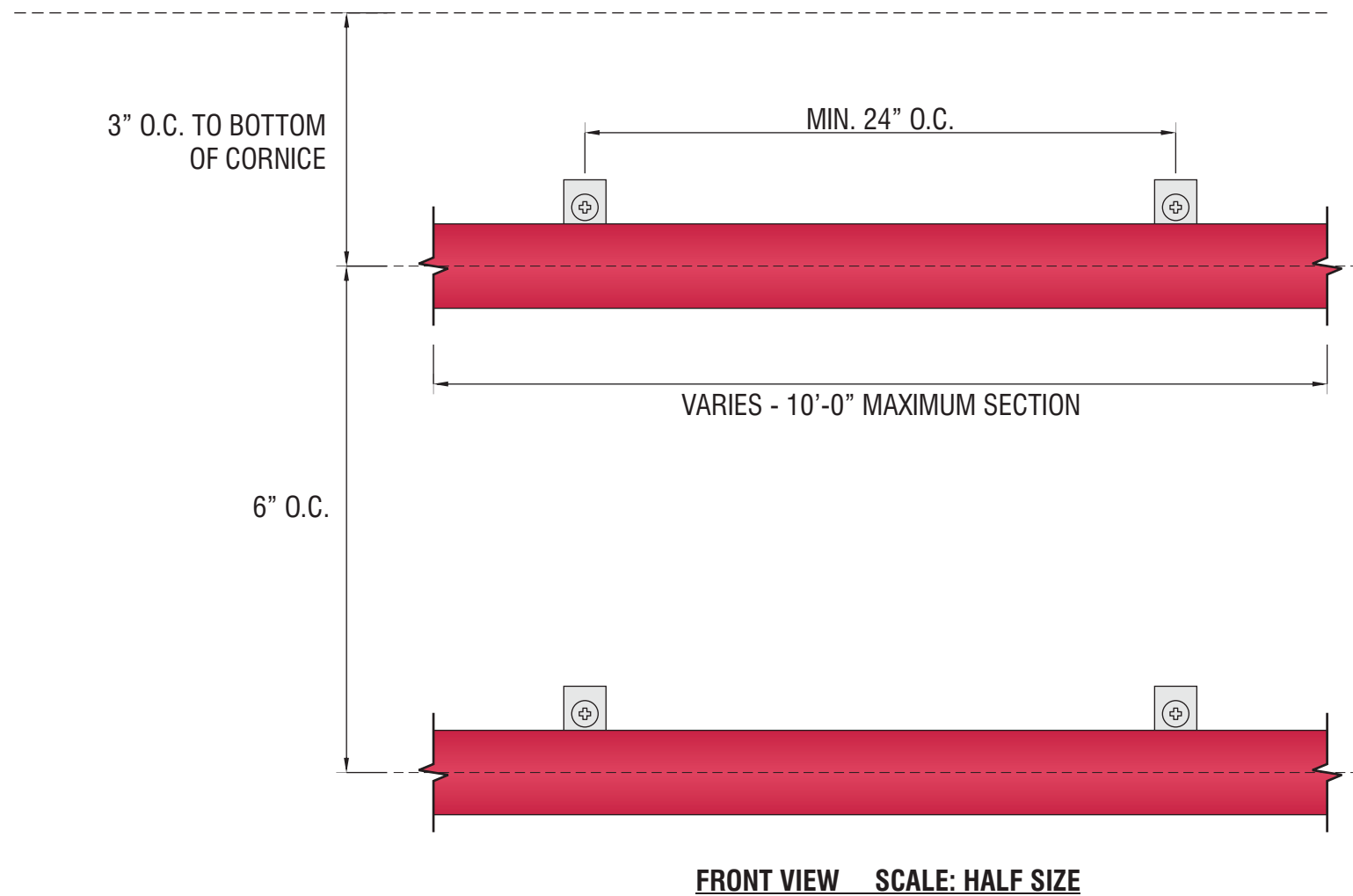
In-N-Out

1900 E. Plaza Blvd. National City, CA 91950

This design is the exclusive property of Signtech and cannot be reproduced in whole or in part, without their prior written approval

Sales: Bob McCarter
Coordinator: Garry Wilcox
Design: Thomsen
Engineering:

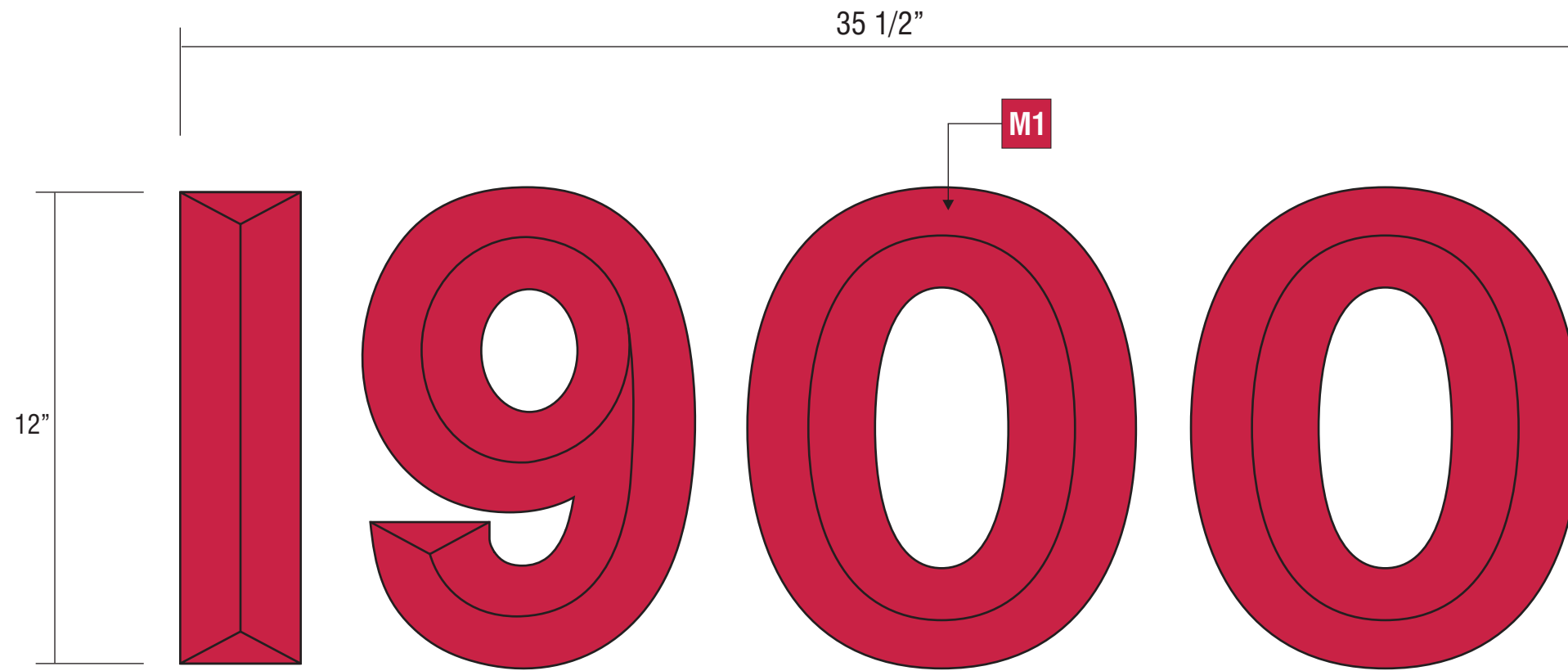
date: 03/05/21
drawing: 21-00348 **rev:** 2-03/23/21
quote:
project ID: IN-N-OUT_PLAZA_1



E SIGNTYPE INO-LED BORDER TUBE

MANUFACTURE AND INSTALL LED TUBE BORDER STRIPES

'SLOAN' LED RED LIGHTING SYSTEM.
 ALL ELECTRICAL COMPONENTS
 TO BE UL LISTED. ATTACH TO WALL AS REQUIRED.



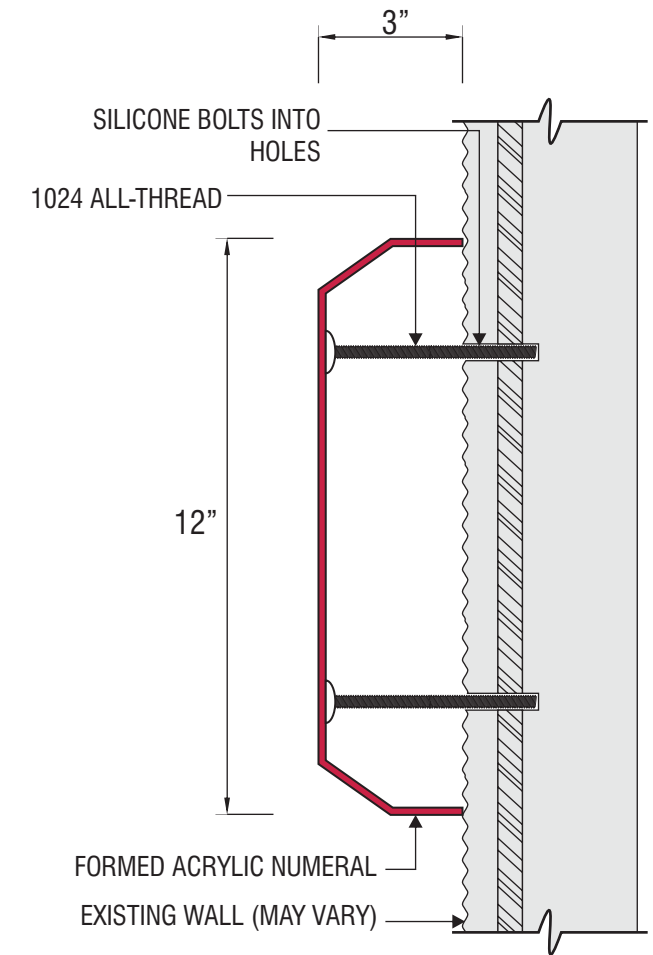
SCALE: 3"=1'-0"

F SIGTYPE **INO-CL-PL-12-ADDRESS-1900**

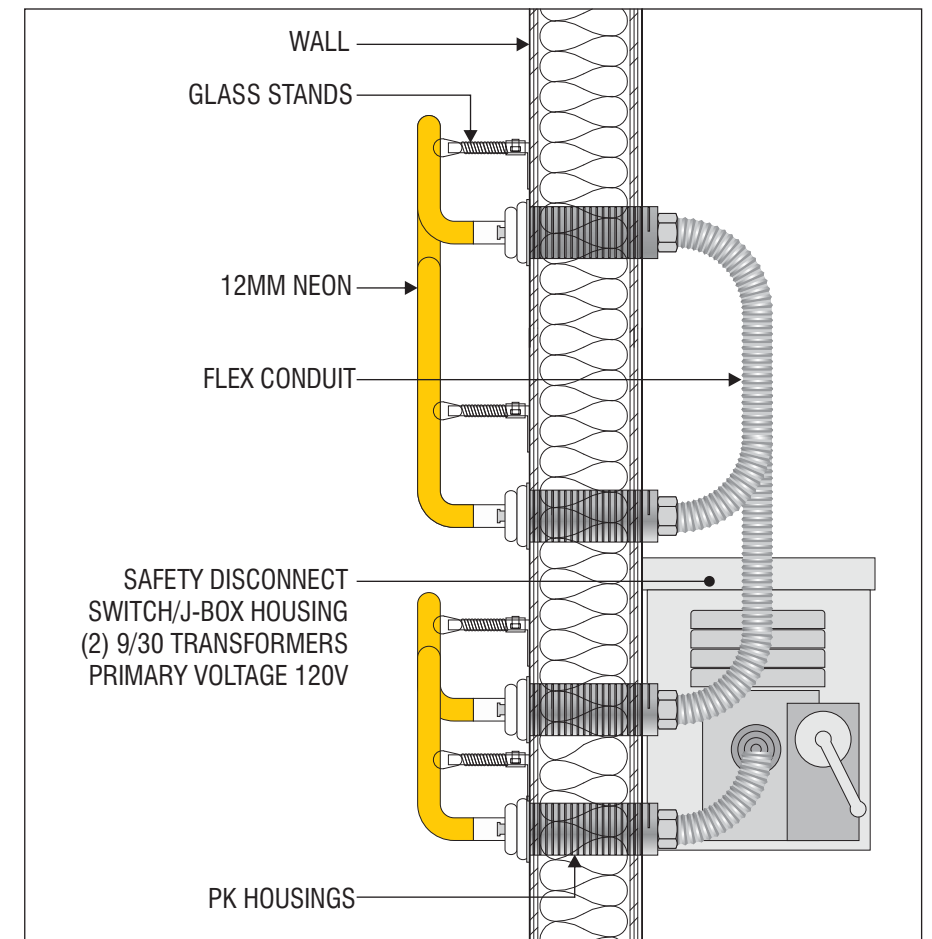
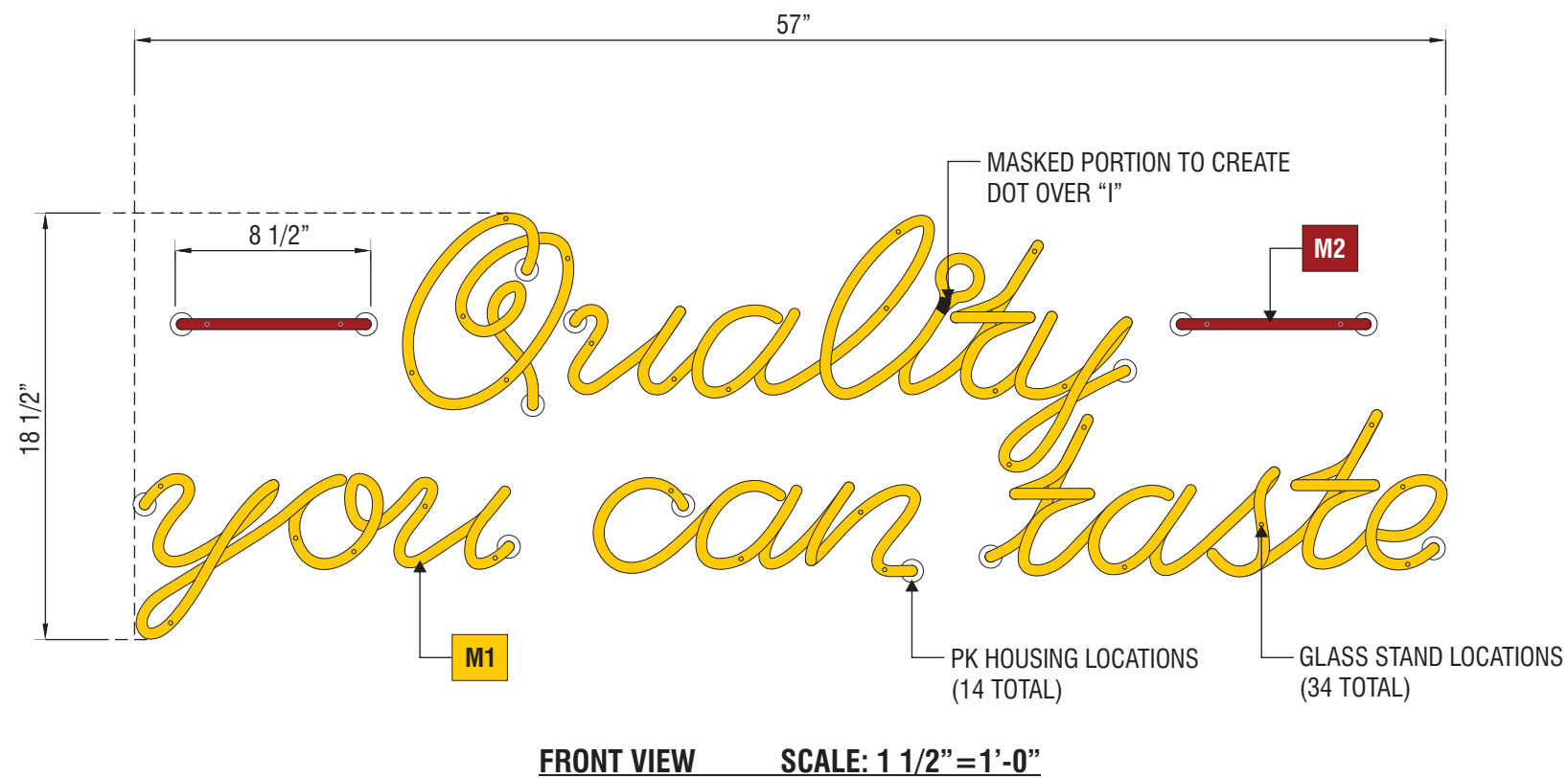
MANUFACTURE AND INSTALL ONE (1) SET OF NON-ILLUMINATED ADDRESS NUMERALS

MATERIAL

M1 RED ACRYLIC #211-1



INSTALLATION SECTION SCALE: 3"=1'-0"



INSTALLATION SECTION SCALE: 3" = 1'-0"

G SIGNTYPE **INO-QYCT-NEON-18x57**

MANUFACTURE AND INSTALL ONE (1) INTERIOR EXPOSED NEON WALL SIGN

MATERIALS

- M1** EGL DOUBLE COATED 'NOVIOL GOLD' P73 EXPOSED NEON ILLUMINATION (12MM)
- M2** EGL DOUBLE COATED 'RUBY RED' EXPOSED NEON ILLUMINATION (12MM)

