

# National City Brownfields Assessment Project

Jessica Barlow, Professor  
San Diego State University  
June 20, 2023



# What is a brownfield?

- A brownfield is a piece of land where its use or reuse may be complicated by the presence or potential presence of contamination due to past uses
- Often, environmental testing is necessary to determine actual site conditions



EPA 560F19006 handout



# Why SDSU?

Collaborating with the National City community since 2013, through the Sage Project and the launch of BrightSide Produce.



# Grants + Funding

## **US Environmental Protection Agency\*** (EPA)

Brownfield Grants Program, Community-Wide Assessment Grant (\$500,000) [3 years]

## **CA Department of Toxic Substances Control\*** (DTSC)

Equitable Communities Revitalization Grants (ECRG) Program, Community-Wide Assessment Grant (\$296,762) [2 years]

\*Funds do not support:

Remediation and site cleanup activities

Construction, development



# Planned Activities

## Brownfield Site Identification

Compile a list of brownfields in National City and identify past uses using resident expertise, existing databases of environmental contamination, and mapping software (GIS)

## Site Prioritization

Develop site prioritization criteria. These criteria may include (but are not limited to) community planning priorities, site location and size, past use, neighborhood context

## Environmental Assessments

Determine existing environmental contamination through Phase 1 and Phase 2 Environmental Site Assessments

## Reuse Planning

Coordinate future site plans based on community priorities and site conditions

## Community Engagement



# Planned Activities





# Brownfields Advisory Committee



**Carlos Aguirre**  
City of National City



**Jessica Barlow**  
San Diego State U



**Janet Barragán**  
County of San Diego



**Jim O'Callaghan**  
South County EDC



**Chris Clark**  
Urban Land Institute



**Monserrat Hernandez**  
Environmental Health  
Coalition



**Kristofer Patrón**  
San Diego State U



**Tatiana Perez**  
Urban Land Institute



**Madi Swayne**  
San Diego State U



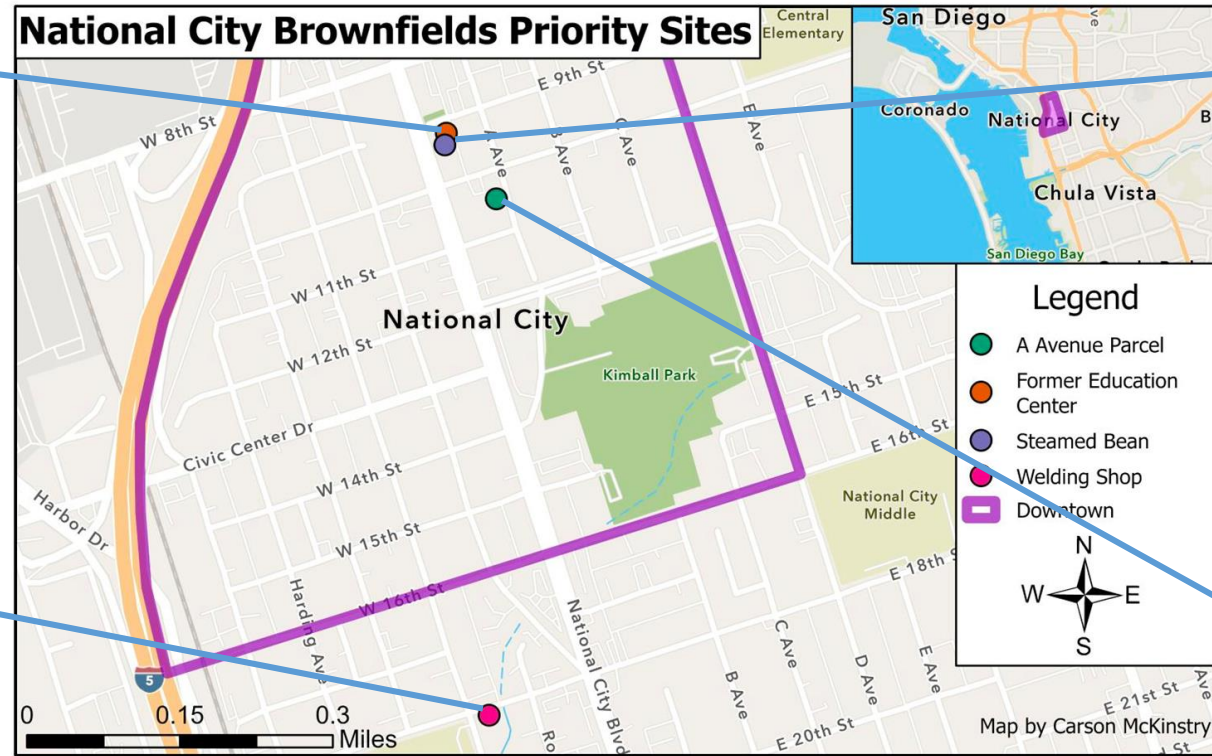
# Brownfield Initial Priority Sites



**Former Education Center**  
921 National City Blvd



**Welding Shop**  
140 W 18th St



**Steamed Bean**  
929 National City Blvd



**A Ave Parcel**  
1028 A Ave

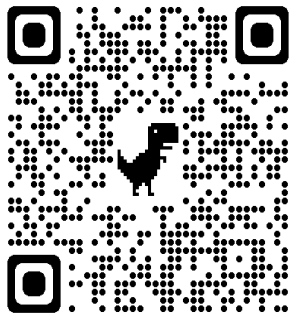




# Community Kick-Off Event

## March 23, 2023, at ARTS

- Overview to brownfields, the project and the grants
- Site nomination activity
  - Contribute to development of site inventory
  - Prepare for prioritization of additional sites



<https://bit.ly/BFsEventHandouts>



# Brownfields Site Nomination

- Complete online site nomination at our website or by using this QR code or on our website (in English or Spanish)
- Available through end of July



<http://bit.ly/NC-BFs-nominate-a-site>



# Save the Date!

<b><i>What:</i></b>	<b>Brownfields Site Prioritization Community Meeting</b>
<b><i>When:</i></b>	Wednesday, August 2, 2023, 5:30-7p
<b><i>Where:</i></b>	A Reason To Survive (ARTS), 200 E 12 <sup>th</sup> St, National City
<b><i>Who:</i></b>	Everyone welcome!

Snacks and refreshments will be provided, and coloring stations will be made available for children who attend

Spanish/English live interpretation will be provided

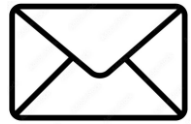


# Connect with us



**Website:**

[brownfields.sdsu.edu](http://brownfields.sdsu.edu)



**Email:**

[brownfields.crs@sdsu.edu](mailto:brownfields.crs@sdsu.edu)



**Facebook:**

[@SDSUBrownfields](https://www.facebook.com/SDSUBrownfields)



**Instagram:**

[@brownfields.sdsu](https://www.instagram.com/brownfields.sdsu)

